

**A Consultation Report
In Support of the
Environmental Assessment
For
An Offshore Seismic Project
Labrador Shelf Area**

Submitted to:

RPS Energy
Liberty Place 2nd Floor
1545 Birmingham St.
Halifax NS B3J 2J6

Submitted by:

Sikumiut Environmental Management Ltd.
P.O. Box 39089
175 Hamlyn Rd.
St. John's, NL, A1E 5Y7
Phone: 709-754-0499
Fax: 709-754-1445

www.sikumiut.ca

March 2, 2011
Sikumiut File # 047-003

Table of Contents

1.0	Introduction.....	1
2.0	The Consultation Method.....	1
3.0	The Results	2

List of Appendices

Appendix A	Letter of Introduction
Appendix B	Information Package
Appendix C	Stakeholder List
Appendix D	Stakeholder Consultation Notes
Appendix E	Risk Management Matrix Guidelines

1.0 Introduction

Sikumiut Environmental Management Ltd. (Sikumiut) was engaged by RPS Energy to carry out a consultation program in support of the Environmental Assessment for a proposed Seismic Project to be conducted on the Labrador Offshore Shelf in 2011. Contacts were made with 105 stakeholders in communities on the north coast of Labrador from Nain to Rigolet; the upper Lake Melville towns of Happy Valley-Goose Bay, North West River and Sheshatshiu; and the south coast communities from Cartwright to Mary's Harbour. Some non-residents with business interests in coastal Labrador were also consulted.

The consultation was planned to facilitate the consideration of stakeholders and the public regarding public issues and concerns that are relevant to the overall project and that will need to be specifically addressed in the environmental assessment report.

2.0 The Consultation Method

Sikumiut began the consultations with correspondence to stakeholders and an information document outlining the project. This correspondence included a letter of introduction and an information package that introduced the companies that are planning to be involved in the proposed project. It provided an overview of the exploratory plans, and presented the consultation process and schedules. It invited questions and comments from stakeholders and presented the opportunity for telephone discussion and direct meetings.

This correspondence was delivered to agencies/stakeholders by e-mail and fax during the period of January 31 to February 4.

A follow-up telephone communication to the correspondence was conducted during the following two (2) week period. It was carried out by phone calls to each individual stakeholder, who had not already responded, to confirm that the correspondence had been received and to determine if any further explanation, questions, comments or discussion were required.

This approach to the consultation, as opposed to holding public meetings in each community, was selected in consideration that in recent years a considerable number of meetings on seismic exploration have been held in these communities which posed a consideration of consultation overload. In 2007- 2008, two (2) series of community consultation were held for the C-NLOPB Strategic Environmental Assessment for the Labrador shelf and in 2009 three (3) separate proponents conducted consultations related to proposed offshore Labrador seismic programs. These meeting were held with relatively low participation.

The Letter of Introduction and the Information document are contained in Appendix A and B, respectively. The list of stakeholders that were consulted is listed in Appendix C.

3.0 The Results

The information package was distributed to 105 stakeholders and follow-up contacts were made to each individual. A total of 13 of the stakeholders provided an immediate response by e-mail and an intense effort was made by Sikumiut staff to contact the others by telephone. The overall effort resulted in receiving responses and holding discussions with the majority of those contacted.

Direct meetings with held with the Fish Food and Allied Workers Union (FFAW) and One Ocean and the Chairperson of the Labrador North Coast Fishers' Committee at their request.

Many of the stakeholders contacted were representing agencies such as Aboriginal governments, town councils, fishers committees and development boards. Many of these contacts advised that they had distributed the information with their members and some had it discussed at their local meetings. This presented the opportunity for a broader community consideration of the information that was provided as well as our receiving group responses as opposed to individual responses.

Most of the stakeholders who responded are interested in the project from a future economic perspective and posed various questions and comments. Concerns were expressed about impacts on the environment, marine life and conflicts with the fishing operations in the area. They expressed a

request to be kept informed and to ensure that the operational safe guards or codes of practices are enforced at all times. They also requested to be informed of any future plans for development.

The tone of the discussions and the issues raised were similar to those discussed with Sikumiut and project proponents at previous seismic project consultations.

The main question and comment areas are summarized as follows:

1. The sensitivity of the area in relation to the commercial fishery resources such as crab, shrimp and finfish were raised during most discussions.
2. The importance of well trained Observers and Fisheries Liaison Officers onboard at all times was stressed.
3. The exclusivity of the Hawke Channel as it is as a crab nursery and a crab pot only fishing area must be respected.
4. The effect of seismic on fish and other animal populations is a concern. Respondents emphasized that more research should be conducted to define the impact.
5. There were complaints that during last year's seismic operation, some fishers were told to remove their fishing gear and some fishers reported gear damage.
6. Effective communications between the seismic and fishing operations during planning and during the operations is an essential component.
7. Compensation for damage to the environment and the fishery was questioned.
8. Community benefits particularly in the context of port services and employment is an important consideration.
9. There were indications of a preference for community meetings should be held in future.

Notes from the more detailed responses, as received, of the issues or concerns are presented in Appendix D.

Appendix A
Letter of Introduction

[Date]

[Insert Name & Address]

Dear {Name}:

Re: Offshore Labrador Shelf Environmental Assessment

RPS Energy is a global multi-disciplinary consulting company with offices in Halifax, Nova Scotia. It is the process of an Environmental Assessment (EA) in preparation for conducting seismic petroleum explorations on the Labrador Shelf area in 2011. As part of this EA, it has engaged Sikumiut Environmental Management Ltd. (Sikumiut) to conduct consultations as required under the Canada-Newfoundland Labrador Offshore Petroleum Board (C-NLOPB) regulations.

The proposed seismic project is a 2 dimension (2D) seismic survey. The area to be covered in this study is shown on the map in the attached information document. This type of seismic survey has been conducted regularly offshore Labrador and local Labrador Inuit observers will be placed on the vessels involved. It is proposed that the project will begin in 2011 and be completed over a six (6) week period and it may continue seasonally over a 3 year period.

The EA is an important requirement of the planning process and necessary in acquiring government approval to carry out the project. As part of the work in preparing the EA report, consultation will be held with stakeholders in the coastal communities adjacent to the study area. The purpose of this consultation is to introduce the proposed plan and to receive local comment and concerns from the coastal areas of Labrador as it may relate to this exploration program.

Enclosed is an information document on the project and we invite any questions or comments you may have about the project by mail, e-mail or phone. While no public sessions are currently planned we are available to discuss the project with you. Our contact information is listed below.

In addition, Sikumiut staff may contact you by phone in the near future to discuss the project and to receive your comments.

Our contacts for this consultation are:


Mr. Harold Murphy
E-mail: hmurphy@nf.sympatico.ca
Telephone (709) 722-1059
P.O. Box 39089
St. John's, NL
A1E 5Y7

OR

Ms. Guylaine Joncas
E-mail: guylaine.joncas@sikumit.ca
Telephone (709) 896-5223
P.O. Box 539, Stn. C
Happy Valley-Goose Bay, NL
A0P 1C0

We look forward to your participation in this consultation.

Yours truly,

A handwritten signature in blue ink that reads "L. Metcalfe". The signature is written in a cursive style and is positioned above a horizontal line.

Leroy Metcalfe, Consultation Project Manager
Sikumit Environmental Management Ltd.
P.O. Box 39089
St. John's, NL
A1A 5Y7

Appendix B
Information Package

INTRODUCTION

TGS-NOPEC Geophysical Company ASA (TGS- NOPEC) and Multi Klient Invest AS, a company associated with Petroleum Geo-Science (PGS), in a joint venture, propose to conduct a 2D marine seismic exploration survey project offshore Labrador Shelf within the regulatory jurisdiction of the Canada-Newfoundland and Labrador Offshore Petroleum Board (C-NLOPB). Multi Klient Invest AS will be the operator.

The Environmental Assessment (EA) is being conducted by RPS Energy. The EA is an important requirement of the planning process and necessary in acquiring government approval to carry out the project. As part of the work in preparing the EA report, Sikumiut Environmental Management Ltd. (Sikumiut) will conduct consultations with stakeholders in the coastal communities immediately adjacent to the Study Area. The purpose of this consultation is to introduce the proposed plan and to receive local comment and concerns regarding the coastal areas of Labrador as it may relate to offshore oil and gas development.

TGS-NOPEC provides geoscience data and services to oil and gas Exploration and Production companies around the globe. TGS geophysical and geological data products include multi-client seismic libraries, extensive magnetic and gravity data, the industry's largest global database of digital well logs and regional interpretive products. TGS also provides high-end depth imaging services to help resolve complex seismic imaging problems (See *www. tgsnopec.com*).

PGS (and its subsidiary Multi Klient AS) is a publicly traded Norwegian company Norwegian and is one of the major global companies in the acquisition of seismic data for the oil and natural gas companies. PGS has offices in over 25 countries with regional centers in London, Houston and Singapore. The headquarters is in Oslo, Norway and the PGS share is listed on the Oslo stock exchange. (See *www.pgs.com*).

THE ENVIRONMENTAL ASSESSMENT

The approach for the project has been developed to satisfy requirements of the Canada Environmental Assessment Act.

It is designed to:

- focus on issues of great concern;
- address regulatory requirements;
- considers stakeholder issues and concerns early in the planning process;
- focus project specific environmental assessments by identifying the key environmental issues associated with a particular activity and/or area.

In this particular case, Valued Environmental Components (VECs) will be included but not limited to:

- marine and migratory birds; marine fish and shellfish;
- marine turtles;
- species at risk;
- sensitive areas; and
- commercial fisheries.

PROJECT OVERVIEW

The official name of the project is PGS/TGS NOPEC 2011 Labrador Shelf. The survey area is illustrated in Figure 1. Note that the area covered appears quite large, however the survey lines will form a very wide grid within the study area. Survey lines will be spaced approximately 100 Km apart and within the area there will be 10 lines running from the northwest to the southeast and six lines running from the southwest to the northeast. It is within C-NLOPB jurisdiction, outside the 12 mile limit and outside the "Zone" area of the Labrador Inuit Land Claims Agreement.

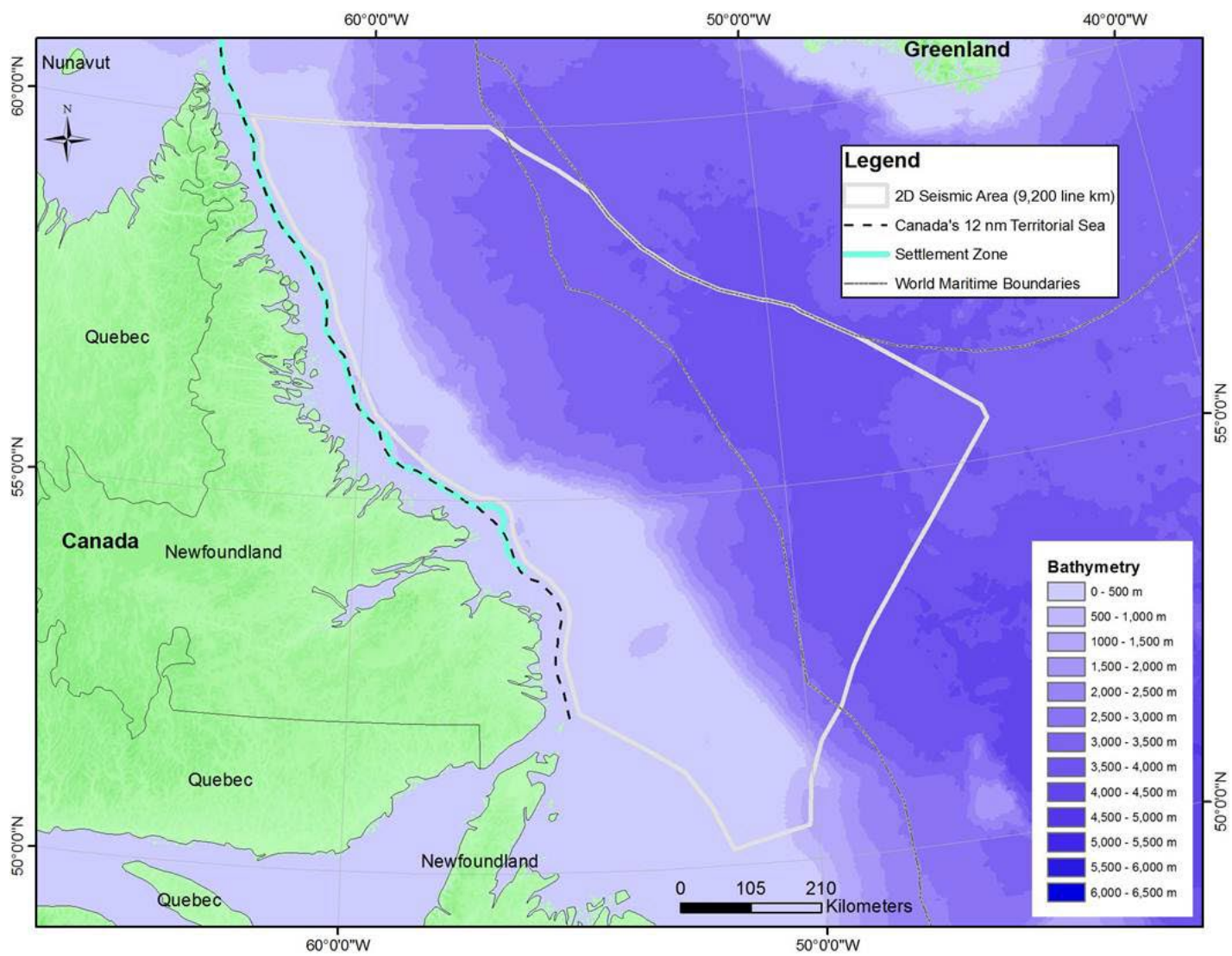


Figure 1. Study Area

- The project is a marine geophysical mapping program very similar to past surveys conducted in the area by other operators from 2002-2010.
- Conventional 2D Seismic technology will be deployed; that is the use of sound pressure to map rock layers and properties through the detection of different reflections of sound passing through the formations.
- A specifically designed, recently built vessel, the *Sanco Spirit*, will tow a single streamer air gun array to produce short bursts of sound energy and sound receiving hydrophones that collect and pass to recorders echoes of sound from reflecting layers.
- The seismic vessel will be accompanied by another vessel which will assist in operations.
- A marine mammal and fisheries liaison officer will be a component of the operational crew. Inuit will be engaged in these roles.
- The survey will be undertaken in the period between June 2011 to December 2011 (most likely during July and August), subject to weather conditions and vessel availability. Ea approvals will allow for continuation on a seasonal basis over a 3 year period ending in 2013.
- The data collected will assist in determining the potential for future oil and gas exploration.

ENVIRONMENTAL ASSESSMENT REVIEWS

The operators will periodically review the EA report, as required by the C-NLOPB, to ensure that it remains applicable for the operations. It will continue stakeholders' consultation as required and will work with regulatory authorities to ensure that the EA remains fit for the purpose.

The results of environmental assessment will be used as part of the project planning and decision-making related to the issues that may be identified for consideration during the operations of this specific project.

These are:

- Fish and fish habitat (focusing on commercial species and their habitat)

- Commercial fisheries;
- Marine mammals and sea turtles;
- Water birds including seabirds, waterfowl and shorebirds;
- Species at risk; and
- Sensitive and special areas.

Other issues may be included based on consultations with various stakeholders including the public, other resource users and regulatory authorities.

YOUR INPUT

You are invited to provide comments on these and any other factors that you feel may be impacted by these activities in the Labrador Shelf Area. You can provide your comments to Sikumiut Environmental Management Ltd. as follows:

Mr. Harold Murphy
E-mail: hmurphy@nf.sympatico.ca
Telephone (709) 722-1059
P.O. Box 39089
St. John's, NL
A1E 5Y7

OR

Ms. Guylaine Joncas
E-mail: guylaine.joncas@sikumiut.ca
Telephone (709) 896-5223
Fax: (709) 896-2865
P.O. Box 539, Stn. C
Happy Valley-Goose Bay, NL
A0P 1C0

Appendix C
Stakeholder List

Agency	Community	Contact Person (s); Affiliation / Title (s)
Nunatsiavut Government	Nain	Jim Lyall, President
Nain Town Council	Nain	Tony Andersen, AngajukKâk [Mayor]
Nunatsiavut Government	Nain	Molly Shiwak, Business Development Officer
Nunatsiavut Government	Nain	Simon Kohlmeister Conservation officer
Nunatsiavut Government	Nain	Joe Dicker, Community Liaison Officer
Fishers' Committee	Nain	Joey Angnatok, Chairperson
Parks Canada	Nain	Judy Rowell, Superintendant
Nunatsiavut Government	Nain	Ernie Ford Environmental Enforcement officer
Innu Nation	Sheshatshiu	Joseph Riche, Grand Chief
Innu Nation	Sheshatshiu	George Rich, Deputy Grand Chief
Sheshatshiu Band Council	Sheshatshiu	Sebastien Benuen, Band Council Chief
Natuashish Band Council	Natuashish	Simeon Tshakapesh, Band Council Chief
Innu Economic Development Corp.	Happy Valley-Goose Bay	Paul Rich, Chief Executive Officer
Nunatsiavut Government	Hopedale	Susan Nochasak, Minister of Education & Economic Development
Hopedale Town Council	Hopedale	Wayne Piercy, AngajukKâk [Mayor]
Nunatsiavut Government	Hopedale	Ian Winters, Conservation officer
Nunatsiavut Government	Hopedale	Ethel Hunter, Community Liaison Officer
Fishers' Committee	Hopedale	Ross Flowers, Chairperson
Postville Town Council	Postville	Diane Gear AngajukKâk [Mayor]
Postville Town Council	Postville	Shirley Goudie, Town Manager

Agency	Community	Contact Person (s); Affiliation / Title (s)
Nunatsiavut Government	Postville	Brenda Colbourne, Community Liaison Officer
Nunatsiavut Government	Postville	Wilfred Lane, Conservation Officer
Makkovik Town Council	Makkovik	Herb Jacque, AngajukKâk
Makkovik Town Council	Makkovik	Terry Rice, Town Manager
Nunatsiavut Government	Makkovik	Carol Gear, Community Liaison Officer
Nunatsiavut Government	Makkovik	Errol Andersen, Conservation Officer
Fisher's Committee	Makkovik	Lester Mitchell, Chairperson
Rigolet Town Council	Rigolet	Charlotte Wolfrey, AngajukKâk [Mayor]
Rigolet Town Council	Rigolet	Sarah Blake, Town Manager
Nunatsiavut Government	Rigolet	Paula McLeans Sheppard, Community Liaison Officer
Nunatsiavut Government	Rigolet	David Wolfrey, Conservation Officer
Fishers' Committee	Rigolet	Richard Riche, Chairperson
Nunatsiavut Government	Rigolet	Darryl Shiwak, Minister Lands and Natural Resources
Combined Councils of Labrador	North West River	Nick McGrath, President
Labrador Metis Nation	Happy Valley-Goose Bay	Chris Montague, President
Nunatsiavut Government	Happy Valley-Goose Bay	Carl Mclean, Deputy Minister of Lands & Natural Resources
Nunatsiavut Government	Happy Valley-Goose Bay	Tim McNeill, Deputy Minister of Education & Economic Development
Nunatsiavut Government	Happy Valley-Goose Bay	Ataomie Blake, Community Liaison Officer
Nunatsiavut Government	Happy Valley-Goose Bay	Joseph Townley, Conservation Officer
Labrador Friendship Centre	Happy Valley-Goose Bay	Stanley Oliver, Executive Director

Agency	Community	Contact Person (s); Affiliation / Title (s)
Central Labrador Environment Action Network	Happy Valley-Goose Bay	Frank Russell, Executive Director
Labrador Inuit Development Corporation	Happy Valley-Goose Bay	Chris Webb, Assistant General Manager
Torngat Fish Producers Co-operative Society Ltd.	Happy Valley – Goose Bay	Keith Watts, General Manager
Torngat Joint Fisheries Board	Happy Valley – Goose Bay	Jamie Snook, Executive Director
Central Labrador Economic Board	Happy Valley-Goose Bay	Carol Best, Executive Director
Town of Happy Valley-Goose Bay	Happy Valley – Goose Bay	Leo Abbass, Mayor
Town of Happy Valley-Goose Bay	Happy Valley – Goose Bay	Wyman Jacque, Town Manager
Fishers' Committee	Happy Valley – Goose Bay	Ralph Tooktashina, Chairperson
Town of North West River	North West River	Wendy Hillier, Acting manager
Town of North West River	North West River	Ken Nelson, Manager
Nunatsiavut Government	North West River	Dean McLean, Conservation Officer
Sivunivut Inuit Community Corporation	North West River	Ed Tuttauq, Chairperson
Cartwright Town Council	Cartwright	Mayor Rosetta Holwell
Cartwright Town Council	Cartwright	Shirley Hopkins, Town Manager/Clerk
Eagle River Development Association	Cartwright	Wendy Greenleaves, Coordinator
Fisher's Committee	Cartwright	Alexander Elson; Chairperson
Cartwright Fish Plant	Cartwright	David Williams, Manager
Southeastern Aurora	Cartwright	Blair Gillis, President

Agency	Community	Contact Person (s); Affiliation / Title (s)
Development Corporation		
Department of Natural Resources	Cartwright	Eli Sheppard, Eco-systems Manager
Eagle River Development Association	Paradise	Marjorie Learning, Director
Eagle River Development Association	Black Tickle	Kate Turnbull Director [also Floor operations manager at the Black Tickle Fish Plant]
Fishers' Committee	Black Tickle	Albert Dyson, Chairperson
Fishers' Committee	Norman Bay	Gladys Ward, Chairperson
Charlottetown Town Council	Charlottetown	Charmaine Powell, Mayor
Charlottetown Town Council	Charlottetown	Zillah Kippenhuck, Town Clerk
Fisher's Committee	Charlottetown	Earl Stone, Chairperson
Labrador Choice Seafoods, (Fish Plant)	Charlottetown	Pius Walsh, Manager
Fishers' Committee	Charlottetown	Don Kippenhuck, Member
Pinsent's Arm Town Council	Pinsent's Arm	Harrison Campbell, Chairperson, also Shrimp & Crab Harvester
Williams Harbour Town Council	Williams Harbour	Reg Russell, Chairperson [also on Fisher's Committee]
Town of Port Hope Simpson	Port Hope Simpson	Margaret Burden, Mayor
Town of Port Hope Simpson	Port Hope Simpson	Michelle Clarke, Town Clerk
Department of Natural Resources	Port Hope Simpson	Nina Penney, Conservation Officer
Fishers Committee	Port Hope Simpson	Doyle Penney, Member
Fisher's Committee	Port Hope Simpson	Andrew Strugnell, Chairperson

Agency	Community	Contact Person (s); Affiliation / Title (s)
Fisher's Committee	Port Hope Simpson	Lloyd Hicks; Retired Shrimp & Crab Harvester
Southeastern Aurora Development Corp.	Port Hope Simpson	Roxanne Notley, Executive Director
Southeastern Aurora Development Corp.	Port Hope Simpson	Margaret Rumbolt, Economic Development Officer
St. Lewis Town Council	St. Lewis	Lorraine Poole ,Town Clerk
Fishers' Committee	St. Lewis	Neill Chubbs, Chairperson
Mary's Harbour Town Council	Mary's Harbour	Larry Rumbolt, Mayor
Southern Labrador Economic Development Board	Mary's Harbour	Byron Rumbolt, Natural Resources Director
Fisheries Food and Allied Worker Union [FFAW]	Mary's Harbour	Alton Rumbolt, Director Inshore Fishers Council
Fishers' Committee	Mary's Harbour	Aubrey Russell, Chairperson Shrimp & Crab Offshore Committee
Battle Harbour Regional Development Association	Mary's Harbour	Gina Pye, Development Coordinator
Fisheries Consultant	Mary's Harbour	Claude Rumbolt, Private Operator
Lodge Bay Local Service District	Lodge Bay	Keith Rumbolt, Chairperson
Labrador Fishermen's Union Shrimp Company Ltd.	L'Anse au Loup	Gilbert Linstead, General Manager
Labrador Fishermen's Union Shrimp Company Ltd.	L'Anse au Loup	Ken Fowler, Assistant Manager
Department of Fisheries and Oceans	Grand Falls - Windsor	Leon King, Area Manager Northern Newfoundland & Labrador
Department of Fisheries and Oceans	St. John's	Jason Kelly Environment Assessment and Major Projects
Department of Fisheries and Aquaculture	St. John's	Tom Dooley, Director, Resource Policy
Department of Fisheries and Aquaculture	Happy Valley-Goose Bay	Craig Taylor, Area Director
Department of Natural Resources	St. John's	Fred Allen Manager, Regulatory Affairs Petroleum Resource Development

Agency	Community	Contact Person (s); Affiliation / Title (s)
		Energy Branch
Department of Environment and Conservation	St. John's	Martin Goebel, Assistant Deputy Minister
Environment Canada	St. John's	Glenn Troke, Environmental Assessment Coordinator
Environment Canada Canadian Wildlife Service	St. John's	Kim Mawhinney
One Ocean	St. John's	Maureen Murphy Rustad, Director
Association of Seafood Producers	St. John's	E. Derek Butler, Executive Director
Fish, Food and Allied Workers Union	St. John's	Earl McCurdy, President
Fish, Food and Allied Workers Union	St. John's	Robin Saunders Lee, Petroleum Liaison Officer
Fish, Food and Allied Workers Union	St. John's	Harvey Jarvis, Projects Manager
Quinlan Brothers Ltd.	Bay De Verde	Robin Quinlan, Manager [Company processes Crab in Black Tickle Plant]
Coastal Labrador Fisheries	St. Lewis Plant	Keith Pardy, Manager [Lives in Mary's Harbour]
Canadian Association of Prawn Producers	Monatick, Ottawa	Bruce Chapman, Director

Appendix D

Stakeholder Consultation Notes

Response from Stakeholders

Nunatsiavut Government – Various Officials

E-mail from a Government Minister

“Thank you for your email. I had been travelling this week, and couldn’t respond right away. I also had a voice mail from one of your staff members in regards of this package.

I would like to say that I have read over the information. I believe that everything is fine. From reading the material and sitting down with the presentation that came to the community.

I had one thought. In regards of the vessels doing the work, and the fisherman who fish around the area. I understand that there was some trouble before, and the fishermen were asked to haul up their gear early. Will this happen again? Or is this solved for both parties to continue doing what they need to do without interruption?

My deputy Minister had also looked everything over and he said he will contact one of you and give his feedback as well”.

E-mail from a Deputy Minister

“Thank you . There were issues last year with the Nunatsiavut crab fishers. I understand you will be communicating with Keith Watts at Torngat Fish Producers co-op to ensure these challenges are addressed this summer’s work. Very pleased there is an opportunity to have Inuit observers onboard and we are currently with Sikimuit to ensure they have adequate training. We would be interesting in knowing if there are other potential opportunities for Inuit as a result of the project. Please don’t hesitate to contact.”

E-mail from a Deputy Minister

“The few comments I have are:

We request you consult with the Torngat Joint Fisheries Board. [Done]

We request you conduct consultation meetings in the Nunatsiavut communities. There was seismic activity last summer and we received a lot of complaints from our core fishermen that the seismic activity affected their catches and we were informed that the seismic gear snagged a fisherman’s grab gear.

If the seismic activity is granted approval to proceed the activity should not commence until after the middle of October to minimize the impacts on the fishery.”

Telephone discussion with a Conservation Officer

Is any information that links Seismic with the recent occurrence of dead seals washing ashore ?

In 2010 fishermen were told by the Seismic vessel to move their gear when it was operating in their area. Fishermen were previously advised that the Seismic vessel was to give way as opposed to the fishing vessels and gear. This needs to be addressed.

Responded with information Feb 3

Telephone discussion with a Community Liaison Officer

Looked at it and with previous information received on this type of work, she doesn't think it impacts the sea life and would like to see it generate employment for the Coast- They would like to be kept informed on when they plan on conducting the work-

Telephone discussion with a staff member of the Lands and Natural Resources Department

What is 2D seismic study? He was concern at the amount of iceberg in the study zone during the months of July and August- Has there been studies as to the impact of seabirds and polar bears? He asked if the fishers committees have raised concerns on shrimp and crab fisheries> He just wanted to make sure these were going to be addressed-

Innu Nation

E-mail and Telephone

Telephone call from a consultant on behalf of Mushuau Innu First Nation (MIFN) in Natuashish

E-mail

" I gave the information to the [Innu Nation] Deputy Grand Chief who read it and provided it to the Grand Chief who was at the table. They advised that this would be mainly an IED [Innu Economic Development] area of concern but was interested. I am not sure what will come from this from Innu Nation or IED as I have no direct involvement with them but there will be a response from MIFN. "

Notes from Telephone Conversation

The MIFN Band Council have reviewed the information document and raised the following questions and points:

- 1. What time will these operations be carried out? [answer provided]*
- 2. He indicated that the Chiefs are interested in the project going ahead and would like to meet with the company when their plans are finalized.*
- 3. He noted that the document indicated that Inuit would be hired for monitors. The chief had asked what these monitors would be doing. The chiefs would also like the monitoring job opportunity for some of their young people, who are becoming trained in fish and wildlife resources,*
- 4. The Natuashish band council are in the process of compiling a 5 -10 year development plan and would be interested in providing services to Northern developments . They are planning to expand the airport and their Harbour facilities and fuel holding tanks could be developed for offshore services. They would like to see the offshore exploration work proceed and they becoming a part of it by providing services.*

Town Councils

Telephone discussion with Town Manager

“Cartwright council looked over the documents at the last meeting and there were no questions or comments presented.”

Telephone discussion with Town Manager

Passed the information to the councilors and they discussed the need to appoint someone on council to address these information packages. They get back to us with the protocol for the future.

E-Mail from an AngajukKâk [Mayor]

I read the information package I have a couple of comments and a couple of questions

Question #1 who will set the guidelines for the monitors to follow while they are on the ship? Will Inuit have input into this?

#2 who will be choosing the monitors?

Here are my concerns: This is a big project with in my opinion with a not too intensive or thorough consultations. My fear is if we accept this as consultations, where does it stop? Will all of the consultations be like this? Because in the information package they say further consultations will be forthcoming. If future consultations will be the passing of information packages or letters to stakeholders I do not consider this as thorough consultations, there are some technical points that without explanation everyday people will have trouble understanding, then expecting them to comment and give feedback is not acceptable.

I hope you take these into consideration when you present the company with your report.

Responded with information Feb 11

Telephone discussion with Town Manager

Makkovik Council - They distributed the documents to the councilors and tabled it at last night's meeting, there were no questions or comments.

E-Mail from an AngajukKâk [Mayor]

“They had their council meeting last night and 2 concerns were raised, one is the impact on the studies on their fishing grounds and what are they? The other will it have an impact on the feedings for migratory birds?”

Note: Some other Mayors and Town Manager advised that it would be discussed at the next council meeting and we would be informed of the outcome.

Fishers and Fishers' Committees

Telephone from a Fishers' Committee Chairperson

Main concern is to protect their offshore crab and shrimp zone that is exclusive to fishing [i.e. Hawke channel].

The fishers want to be part of the [seismic] operation, in that they want the information. They would like to have observers from their region to act as monitors. They want some benefits to accrue to their area from any future industry.

Also on the Combined Councils of Labrador. They are having their AGM on Feb 23 and the petroleum industry is likely to be on the agenda.

Meeting in Goose Bay with Sikumiut by the Chairperson of the fishers committee for the North Coast

Represents about 15 crab, turbot, fish and seal fishermen along the Coast-

- 1. The members would like to know if studies have been done as to the impacts of seismic studies on fish, crab, turbot and seal.*
- 2. He said that many harp seal have been found dead this year and those are the type of seal you find the study areas- He asked if the seismic studies may have been the cause of the seals dying?*
- 3. He asked if the rumors of the waves being 30 times the ones of a fighter jet are true.*
- 4. Their committee met with the CNLOPB two years ago in Goose Bay and were told that before any vessel would operate in the fishing route that the fishermen would all be contacted first and their fishing season would not be impacted or their gear damaged- He said that hasn't been the case, Fishermen off Makkovik were asked to take up their gear last year and some of it got damaged- No fishermen knew they were doing studies in that area.*
- 5. Their committee would like to know if studies can be done outside of the crab season. Which depending on the ice could be late June/July?*
- 6. They would also like to get some information on the equipment used to do the work and their impact.*

Telephone from a Fishers' Committee Chairperson

Indicated that he did not know much about seismic but he talked about the crab and shrimp fishery. They fish the area 35 to 90 miles off shore for these species and there should be other areas that seismic can be carried out and avoid conflict with fishing operations. He was advised that there are procedures in place that deal with that issue during the operations.

Telephone from a Fishers' Committee Chairperson

North Coast Fisher : This was tabled at a fishers committee meeting in Makkovik last week- They would like to know what is the sound that is sent under water - And what does it sound like at different levels down? What effects has this had on sea life- when were the studies done? He said the study here is proposed for July and August, they would like it moved until the Fall for fear of the noise coming from the study to drive the crab away from the fishing

areas- They want to make sure that no study goes ahead without the coastal fishermen being notified ahead of time, they want to be involved in decisions made and that their concerns are addressed first.

Fish Processors and Associations

E-Mail from an Association Executive Director

"Thank you for this. No concerns or queries for my part, all looks fine. I do appreciate being contacted, and please keep me informed of any updates or changes".

Telephone discussion with a Processing Company General Manager

He inquired about the technical seismic operations and that was explained to him. He had no complaints or concerns. He also indicated that others in the company are of a similar position.

Telephone discussion with a Processing Cooperative General Manager

On behalf of Torngat Fish Coop and Torngat Joint Fisheries Board:

- 1. Keith asked which client in particular was this study done for?*
- 2. The Board members and fishermen do not believe that seismic studies have no impact on sea life.*
- 3. Are crab populations studied right before a seismic study and again right after? and for other fish species as well and if so which ones and when?*
- 4. Fishermen on the Coast have a short fishing season and were wondering if the Seismic studies could be done outside of the fishing season, preferably at the end of the season.*
- 5. Communications are promised by clients doing studies but not respected.*
- 6. Last year fishermen off Makkovik were asked to take their gear out of the water at the last minute. Some had their gear damaged. They want advance notification.*
- 7. The seismic companies should know soon when and where they are going to do work for 2011 and fishers want to know as soon as the company has finalized these plans.*
- 8. He is available for further discussion and would like to be kept informed on all findings and copied on communications regarding this matter and the affects to the fishermen.*

Fish Food and Allied Workers Union

E-Mail from Petroleum industry Liaison

"As you are no doubt aware the fishing industry is a large stakeholder in this rather large area of interest. I would like to meet with you and/or the company as soon as possible to discuss the proposed stakeholder consultations and proposed seismic activities in 2011, 2012 and 2013".

One Ocean

E-Mail from Director

'I would very much like to schedule a meeting with you to discuss your proposed project and provide you with some useful information on One Ocean. I have spoken with Robyn Saunders Lee, Petroleum Industry Liaison, at the FFAW and we would be willing to hold a joint meeting with you. Please contact us with suggested meeting dates at your convenience.'

Meeting notes from a meeting with FFAW and One Ocean – Feb 8

- 1. The area of study extends into NAFO area 3K and Fishers in that area should be consulted. The FFAW will be responding with a list of their members that should be consulted.*
- 2. Observers from the Inuit community are good and the FFAW want to have their observers / Fisheries liaison Officers onboard the vessel as well.*
- 3. In order to coordinate with the fishing operations the FFAW will need to know the specific schedule and locations of the seismic vessel.*
- 4. The conservation area in the Hawke channel needs to be protected.*
- 5. One Ocean presented a "Risk Management Matrix Guidelines that adopted by the Petroleum Industry and FFAWU on behalf of the Fishing Industry and is used for seismic operations in fishing areas. This Matrix is appended to the report in Appendix E*

Economic Development and Social Organizations

E-Mail from an Inuit Community Corporation

"Thank you for this info. I am currently in Hopedale for the next sitting of the Nunatsiavut Assembly, but would like to find out more about the seismic process; what disruptions this testing may have on mammals, etc. I would also like to be kept informed about possible community meetings".

Responded with information Feb 3

E-Mail from Executive Director Labrador Friendship Centre

Thanks for the information. Please pass on my appreciation for keeping us as a Social Enterprise in the loop as it relates to major proposed natural development."

Telephone discussion with the Central Labrador Economic Development Board

"They have formed an offshore oil and gas committee and would very much like to be kept informed on the activities as well to get put on the list for information sessions and would like to be notified of report publishings".

They sent the following letter:

“We have reviewed the documentation provided regarding the environmental assessment for seismic exploration activity to be conducted on the north coast of Labrador. The area of this activity is outside the boundaries of Economic Zone 3, the area of consideration for the Central Labrador Economic Development Board, however there may be some impacts to residents of our zone who use that area of the coast or to businesses in our zone that supply goods and services.

At this time we do not have any direct concern with the proposed seismic exploration activity proposed in the documentation.

We recognize that greater economic impact will be realized when drilling exploration and production of oil/gas occur and look forward to participating in the process of exploring business and employment opportunities related to those activities.

Thank you for including the CLEDB in the consultation process”

Federal and Provincial Government Officials

Telephone and E-mail

DFO, Environmental Assessment and Major Projects group.

DFO reviews an EA in reference to the DFO Statement of Canadian Practices; the mitigation plans that required to be in place by the company; species at risk in reference to the SERA registry, up to date fisheries information. He mentioned that these requirements are outlined in the CNLOPB scoping document. He indicated that they are available to answer any questions as it relates to DFO requirements in an EA.

E-mail

“As a follow-up to our conversation yesterday I have attached a number of links pertaining to the information you will be requested to provide (via the Scoping document) for the proposed program. May I also suggest you review other EA documents for similar exploration type projects to get additional references etc... This can be found at on the CNLOPB website at

http://www.cnlopb.nl.ca/env_project.shtml

1. Statement of Canadian Practice with respect to the Mitigation of Seismic Sound in the Marine Environment

<http://www.dfo-mpo.gc.ca/oceans/management-gestion/integratedmanagement-gestionintegree/seismic-sismique/index-eng.asp>

2. Strategic Environmental Assessment - Labrador Shelf

http://www.cnlopb.nl.ca/env_strategic.shtml

3. SARA Public Registry

http://www.sararegistry.gc.ca/default_e.cfm

4. Fisheries Information (Commercial, Recreational, Aboriginal stats, etc...)

<http://www.dfo-mpo.gc.ca/fm-gp/index-eng.htm>

*Environmental Assessment & Major Projects | Evaluation environnementale et grands projets
Oceans, Habitat & Species at Risk Branch | Direction des océans, de l'habitat et des espèces en péril
Fisheries and Oceans Canada | Pêches et Océans Canada
PO Box 5667, St. John's NL A1C 5X1 | BP 5667, St. John's. T.-N A1C 5X1*

E- Mail from NL Department of Environment and Conservation

"Thank you for this notification. I have shared the information with my staff and I will contact you if there are any questions or comments arising. I appreciate your efforts to keep me informed."

Telephone discussion with NL Department of Fisheries and Aquaculture

Raised the issue of the fishery in the region and the concern of gear/operational conflicts

Appendix E

Risk Management Matrix Guidelines



Risk Management Matrix Guidelines

for the utilization of Fisheries Liaison Officers and Fisheries Guide Vessels for the Fishing and Petroleum Industries of Newfoundland and Labrador

LEVEL OF FISHING ACTIVITY	SEISMIC OPERATIONS					TRANSIT-TOW OPERATIONS			
	VSP	EMS	WSS	2D	3D	Drill Ship	Drill Rig	FPSO	GBS
Fishery Closed in Area	Green	Green	Green	Green	Green	Green	Green	Green	Green
Fishery Open- No Recent Fishing in Area	Green	Green	Green	Yellow	Yellow	Green	Yellow	Yellow	Red
Fishery Open-Area Actively being Fished	Green	Green	Green	Yellow	Yellow	Yellow	Red	Red	Red

	The Petroleum Industry Liaison at the Fish, Food and Allied Workers (FFAW) Union should be notified in advance of all seismic, transit and tow operations outside of the Field Safety Zone
	The use of a Fisheries Liaison Officer should be considered in consultation with the FFAW
	The use of a FLO and Fisheries Guide Vessel should be considered in consultation with the FFAW

NOTES:

1. The Matrix provides useful criteria and considerations for mitigative and safe practices for the fishing and petroleum industries. The Matrix is a guideline for industry consultations and does not in any way replace them.
2. The Matrix is designed for seismic, transit and tow operations located outside a field or exploration operation safety zone.
3. Fisheries Guide Vessels will be commercially registered fishing vessels and part of the FFAW's Guide Vessel Program.
4. Fishing activity referenced in the Matrix refers to fixed fishing gear/equipment only.
5. Operators accept liability for compensation of any fisheries gear damage that is directly attributable to an operation.

Acronyms:

- 2D Two-Dimensional Seismic
- 3D Three-Dimensional Seismic
- EMS Electromagnetic Survey
- FPSO Floating Production Storage Offloading Vessel
- GBS Gravity Base Structure
- VSP Vertical Seismic Profiling
- WSS Well Site Survey

One Ocean was established in 2002 as the inter-industry liaison organization for the fishing and petroleum industries in Newfoundland and Labrador. Its mandate is to facilitate cooperation, communication and information exchange between the two marine sectors. The Risk Management Matrix Guidelines for the Utilization of Fisheries Liaison Observers and Fisheries Guide Vessels for the Fishing and Petroleum Industries in NL, (Matrix) was developed by members of One Ocean. Its application should be developed in collaboration with industry, regulators and One Ocean. Contact One Ocean at 709 778 0511.

For more information on regulations please reference the Canada-Newfoundland and Labrador Offshore Petroleum Board (C-NLOPB) Geophysical, Geological Environmental and Geotechnical Program Guidelines 2008: <http://www.cnlopb.nl.ca/pdfs/guidelines/ggegpg.pdf> The C-NLOPB is the authority responsible for the administration of the regulations pertaining to all exploration for, and production of, hydrocarbons in the Newfoundland and Labrador offshore area.