



REVISION SUMMARY FORM		
Current Revision	Revision Description / Purpose	Pages Revised
M6	Section 5.1.4 was updated to reflect the planned activities for 2013-2014.	4
M6	Section 5.2, including Figures 2, 3, 4, 5 and 6, was updated to show cumulative pattern of fishing activity to 2005-2010, 2010 snow crab and northern shrimp catch location data, and June to September 2011 landed weight for snow crab and northern shrimp in Jeanne d'Arc Basin relation to 2013 Suncor proposed operations locations. Section 5.2 also overviews consultations held with the fishing industry in 2013.	5-11
M6	Section 5.3 was updated to reflect changes to species at risk.	11-12
M6	Section 6.0 was updated to reflect changed concluding statement.	13
M6	References were updated since the 2012 update.	13-14
M6	Appendix A has been updated to reflect the current SARA listed and COSEWIC assessed species in the Suncor project areas.	Appendix A

STANDARD DISTRIBUTION LIST			
Position	Name	Company	Location
Vice President, East Coast	Sandy Martin	Suncor	St. John's Office
Director, Exploration	Mike Livingstone	Suncor	St. John's Office
Asset Manager, Terra Nova	Dwayne Zeller	Suncor	St. John's Office
Manager, Drilling, Completions and Intervention	Brian Stacey	Suncor	St. John's Office
Manager, Environment, Health & Safety	Michele Farrell	Suncor	St. John's Office
Team Lead, Environment, ER & Security	Greg Janes	Suncor	St. John's Office
Team Lead, Regulatory Affairs & Quality Management	Collette Horner	Suncor	St. John's Office
Environmental Advisor	Trudy Wells	Suncor	St. John's Office
Manager, Environmental Affairs	Dave Burley	C-NLOPB	St. John's Office
Environmental Assessment Officer	Elizabeth Young	C-NLOPB	St. John's Office

MANAGEMENT OF CHANGE FORM FOR PROCEDURAL DOCUMENTS		
<b>1. Change Category / Description</b>	<b>Y</b>	<b>N</b>
a. Is this a new document (not previously issued) or are major changes being made (examples of <b>major changes</b> include changes in process, responsibilities, requirements, frequency, type)?		✓
b. If Major Change or New, provide a description of the purpose of the changes/document: Document has been updated to reflect new information.		
c. Are minor changes being made (examples of <b>minor changes</b> include clarifying intent, correction of terminology or format with no change to the process)?	✓	
d. Are the changes being made as a result of facility/design modifications? If yes provide the MOC notification number: _____		✓
<b>2. Assessment of Change</b>		
a. Do the changes have the potential to introduce new hazards or impact Safety or Environmentally Critical processes?		✓
b. Do the changes impact regulatory requirements (e.g. documents under the License to Operate, documents in the East Coast Management System, SAP routines)?	✓	
c. If <b>YES</b> to a or b, have representatives of those responsible for processes impacted by the change reviewed and accepted the proposed changes?	✓	
d. Is a Risk Assessment (RA) required prior to issue? If yes provide reference: _____		✓
<b>3. Training Requirements</b>		
a. Do the proposed changes require formal training, orientation, or roll-out?		✓
b. If <b>YES</b> , provide details: _____		
<b>4. Communication Requirements</b>		
a. Are all changes clearly identified / marked and summarized in the Revision Summary?	✓	
b. Did the review/issue processes include all those impacted by the changes?	✓	
c. Is the Standard Distribution List up to date?	✓	
<b>Completed by:</b> Greg Janes <b>Name</b> <b>Team Lead – Environment, ER and Security</b> <b>Position</b>		



## TABLE OF CONTENTS

Revision Summary Form .....	ii
Standard Distribution List.....	iii
Management of Change Form for Procedural Documents.....	iv
1.0 Purpose.....	1
2.0 Scope.....	1
3.0 Abbreviations and Acronyms .....	2
4.0 Roles and Responsibilities .....	2
4.1 Director, Exploration.....	2
4.2 Asset Manager, Terra Nova .....	2
4.3 Team Lead – Environment, Emergency Response and Security .....	2
5.0 Environmental Assessment of Suncor's Jeanne d'Arc Basin Exploration Drilling Program, 2009-2017 (December 2008) & Addendum (April 2009) .....	3
5.1 Project Description and Scope.....	3
5.1.1 Activities Covered .....	3
5.1.2 Geographic Scope .....	3
5.1.3 Temporal Scope.....	3
5.1.4 Planned Activities for 2013.....	4
5.2 Fisheries .....	5
5.3 Species at Risk .....	11
5.4 Mitigations.....	12
6.0 Concluding Statement.....	13
7.0 References.....	13
7.1 Original Suncor Environmental Assessments and Updates .....	13
7.2 Species at Risk Recovery Strategies .....	14

## LIST OF APPENDICES

**Appendix A** Current SARA Listed and COSEWIC Designated & Assessed Species in the Suncor Project Areas

## 1.0 PURPOSE

Offshore oil and gas exploration and production programs may encompass long periods of time and multiple, successive, operational steps. As a consequence of this, environmental assessments of these programs address a variety of activities undertaken over a number of years.

This document is one of a series of reviews of the status and ongoing validity of the environmental assessments currently in place for Suncor Energy Inc.'s activities in the Newfoundland and Labrador Offshore area. These reviews are intended to assist the C-NLOPB in fulfilling its regulatory responsibilities by ensuring that the scope of the assessment(s) and the mitigations committed to therein remain technically valid.

## 2.0 SCOPE

This review focuses on Suncor's environmental assessment that has been approved by the C-NLOPB under which Suncor may be conducting offshore operations during the next twelve months as described in this update. The table below includes a list of Suncor's current environmental assessment approvals.

Screening Determination Reference <sup>1</sup>	Temporal Scope	EA Report Title	Suncor Document Number
CEAR No. 08-01-42400	Year round 2009 through 2017	<i>Environmental Assessment of Petro-Canada Jeanne d'Arc Basin Exploration Drilling Program, 2009-2017</i> (December 2008) & <i>Addendum</i> (April 2009)	PES-CNO-OTH-0406-0015

Section 5.0 addresses the specific assessment listed above and provides the necessary information to confirm the ongoing validity of the assessment in question or note any changes that need to be addressed.

<sup>1</sup> Follow the links to C-NLOPB public registry to view the environmental assessments, amendments and regulatory determinations.

### 3.0 ABBREVIATIONS AND ACRONYMS

C-NLOPB	Canada-Newfoundland and Labrador Offshore Petroleum Board
CEAA	Canadian Environmental Assessment Act
CEAR	Canadian Environmental Assessment Registry
COSEWIC	Committee on the Status of Endangered Wildlife in Canada
DCI	Drilling, Completions, and Intervention
DFO	Fisheries and Oceans Canada
E&P	Exploration and Production
EA	Environmental Assessment
EEZ	Exclusive Economic Zone
EH&S	Environment, Health and Safety
FFAW	Food, Fish and Allied Workers
FLO	Fisheries Liaison Officer
MODU	Mobile Offshore Drilling Unit
MMO	Marine Mammal Observer
NAFO	Northwest Atlantic Fisheries Organization
NW	Northwest
SARA	Species At Risk Act
VSP	Vertical Seismic Profiling

### 4.0 ROLES AND RESPONSIBILITIES

#### 4.1 Director, Exploration

Responsible for ensuring the mitigation measures outlined in the environmental assessment are effectively implemented during the project.

#### 4.2 Asset Manager, Terra Nova

Responsible for ensuring the mitigation measures outlined in the environmental assessment are effectively implemented during the projects within the Terra Nova Field.

#### 4.3 Team Lead – Environment, Emergency Response and Security

Responsible for ensuring the environmental assessment review is submitted to the C-NLOPB and that environmental mitigation measures are communicated to personnel responsible for the planning and execution of the project.



## **5.0 ENVIRONMENTAL ASSESSMENT OF SUNCOR'S JEANNE D'ARC BASIN EXPLORATION DRILLING PROGRAM, 2009-2017 (DECEMBER 2008) & ADDENDUM (APRIL 2009)**

### **5.1 Project Description and Scope**

#### **5.1.1 Activities Covered**

This environmental assessment addresses the potential for drilling 18 delineation and/or exploration wells from semi-submersible or jack-up mobile drilling units or drill ships. It also assesses the effects of geo-hazard surveys and vertical seismic profiles associated with the drilling program.

#### **5.1.2 Geographic Scope**

The geographic scope of the drilling program is depicted in Figure 1. The project area, depicted by the red rectangle, has the following corner coordinates: 48° North and 49.5° West, 48° North and 47° West, 46° North and 49.5° West; and, 46° North and 47° West.

Mitigation procedures for any geo-hazard surveys or vertical seismic profiling operations pursuant to this environmental assessment will follow those defined in Appendix 2 of the *Geophysical, Geological, Environmental and Geotechnical Program Guidelines*, January 2012 (C-NLOPB), including ramp-up (i.e., soft start) of the airgun array(s), the use of dedicated MMOs to monitor marine mammals and turtles and implement shut downs of the surveys when appropriate, and the use of a FLO and communication procedures to avoid conflicts with the fishery. Fisheries liaison measures will, in part, be governed by risk management measures developed by the oil and gas and fishing industries under the auspices of One Ocean. Seabird observations will also be carried out by qualified personnel as required in the above-referenced guidelines.

#### **5.1.3 Temporal Scope**

Exploration and delineation drilling activities as outlined above will be carried out year round from 2008 through 2017.

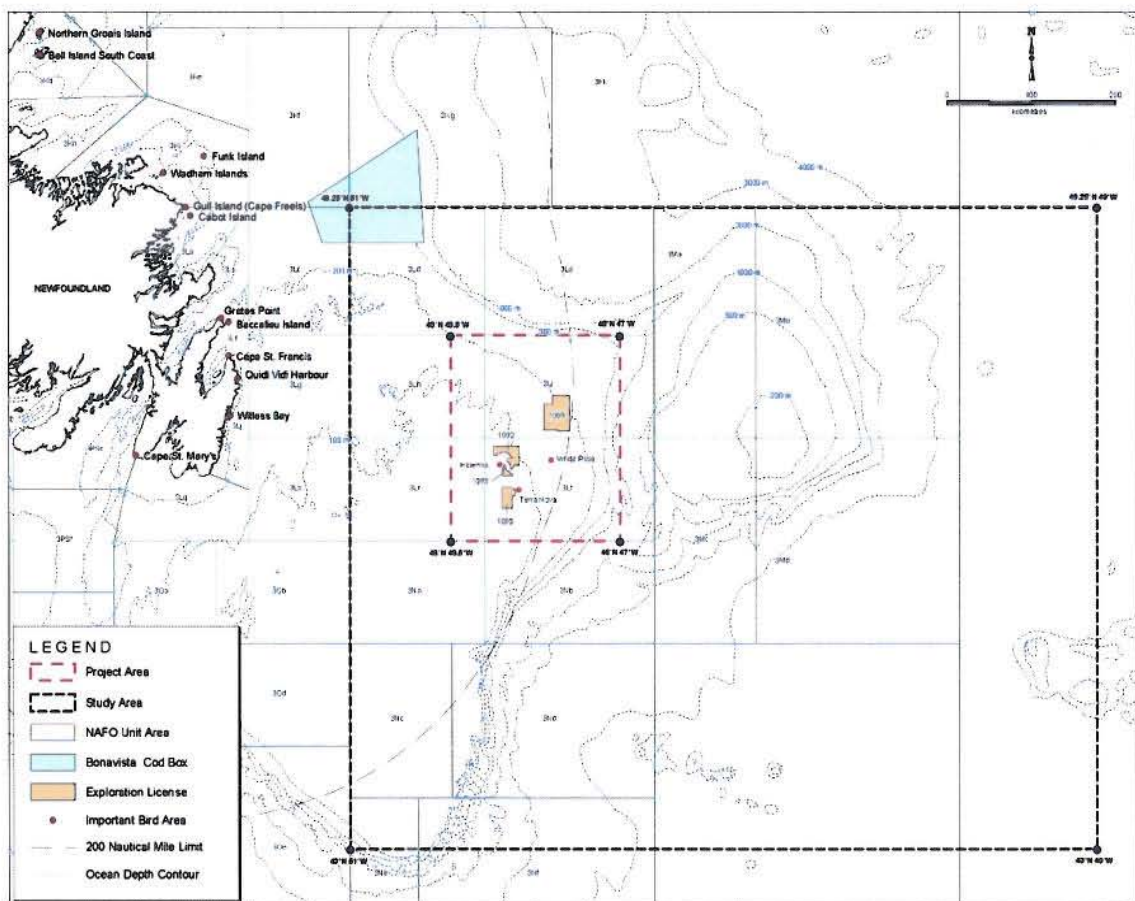


#### 5.1.4 Planned Activities for 2013

Suncor plans to drill a delineation well using the Henry Goodrich MODU over a 2 to 3 month period on its PL 1002 in the summer of 2013. Designated Terra Nova West Flank (E-19), this well will be located at 46°28'18.961"N and 48°32'37.676"W, within the Terra Nova 5 Nautical Mile Safety Zone. Suncor completed a clearance survey in support of this drilling operation in June 2012. A vertical seismic profiling operation to confirm the location of the well bore is not expected to be required.

Additional exploration wells may be drilled in 2013 through 2017 as drilling prospects are identified. Geohazard surveys will be conducted as required to support those operations.

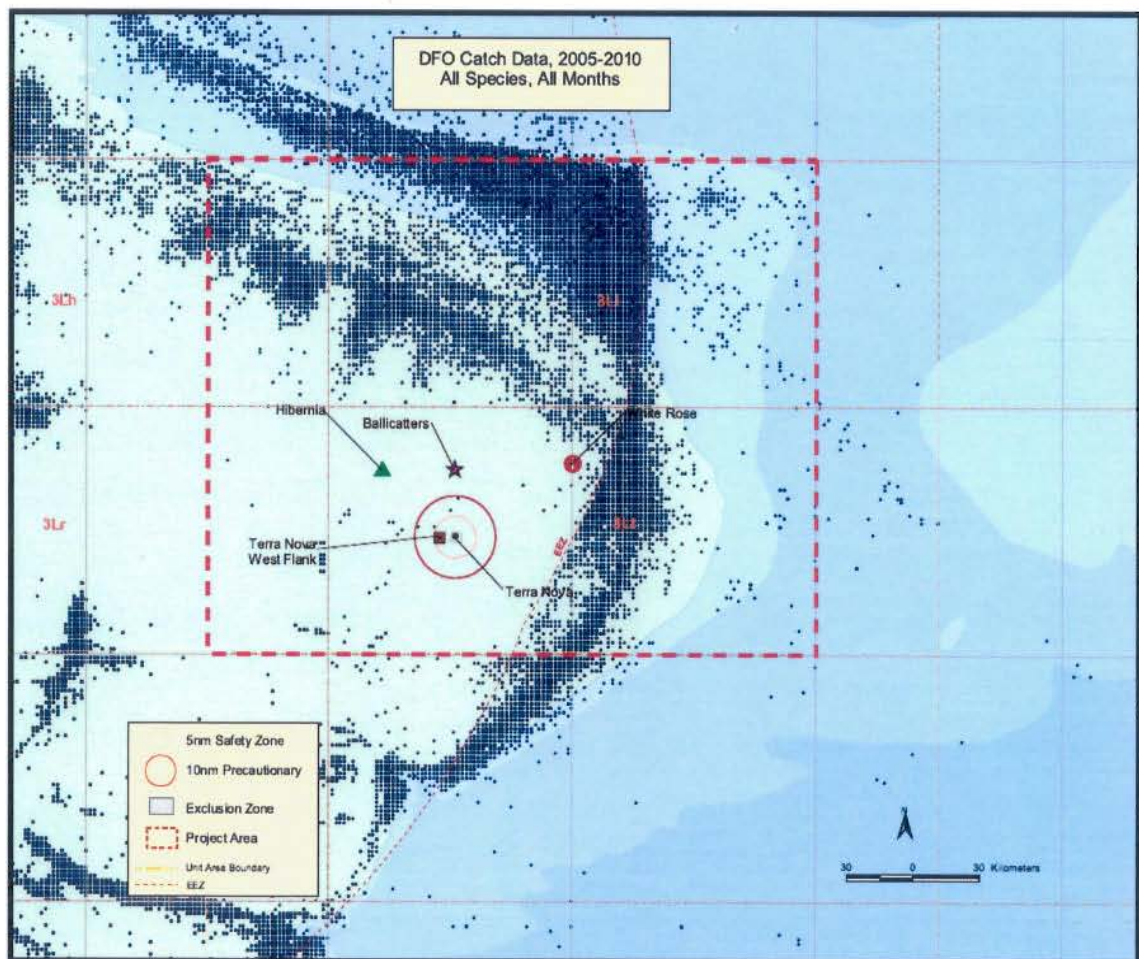
**Figure 1: Geographic Scope of Study Area and Project Area ex CEAR No. 08-01-42400**



## 5.2 Fisheries

Fishing activities in the study area have not changed significantly since the initial environmental assessment was accepted and the program approved. Figure 2 shows the overall pattern of fishing activity for all species in that portion of the Newfoundland and Labrador Offshore Area within which the Project Area defined in the environmental assessment for this drilling program. These data cover the period from 2005 through 2010.

**Figure 2:** Location of the Terra Nova West Flank Drill Site and Terra Nova Field relative general pattern of fishing activities for All Species 2005 to 2010 within the Project Area for CEAR No. 08-01-42400



Due to statutory privacy requirements Fisheries and Oceans Canada has changed the way it compiles its fishing data for release to outside parties for the purpose of environmental assessments and similar uses. As a result, and starting for 2011 data, mapping based on latitude and longitude data of fishing activity as shown in Figure 2 is no longer possible. Therefore, starting with this



update, patterns of fishing activity must be depicted based on classes of landings data in kilograms for 6 by 6 minute blocks.

While the pre- and post- 2011 data are not directly comparable, the general pattern of fishing activity can be inferred from the mapping of the classes of landing data provided and is comparable to the patterns found in prior years. To demonstrate this, Figures 3 and 4 show the relationship between the geographic distribution of the landing class blocks for 2011 and the spatial pattern derived from longitude/latitude data of trawl or pot sets from the previously available 2010 data set for northern shrimp and snow crab respectively.

Figures 5 and 6 map the following classes of landed weight in kilograms for snow crab and northern shrimp caught in 2011:

- Class 1: 0 to 2,377 kilograms
- Class 2: 2,378 to 11,045 kilograms
- Class 3: 11,406 to 45,183 kilograms
- Class 4:  $\geq 45,184$  kilograms

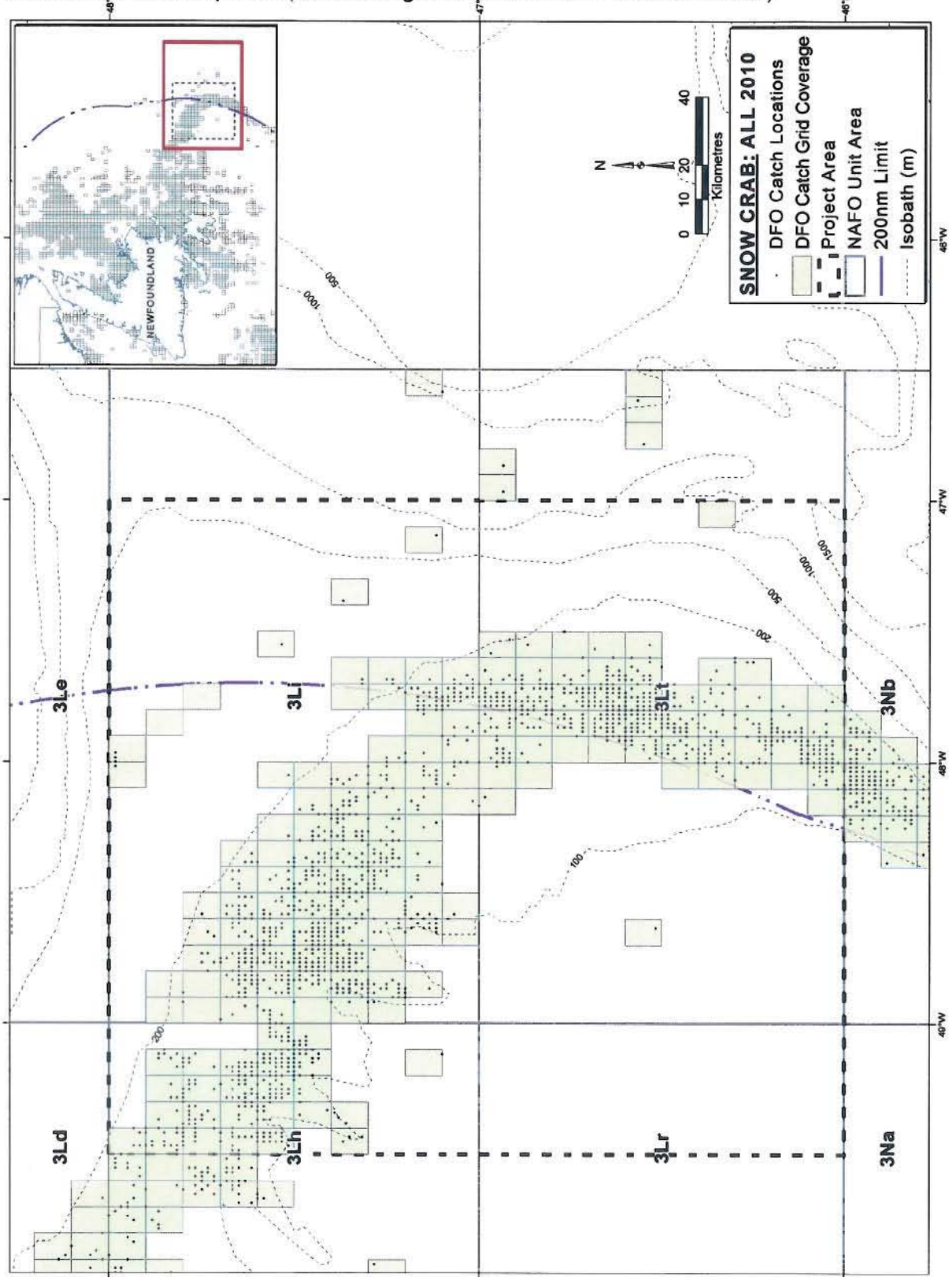
The information mapped is for the months of June through September 2011, the period during which the E-19 well is to be drilled in 2013. Furthermore, information for 2012 is not currently available, nor is information depicting All Species, thus only the high value fisheries – snow crab and northern shrimp are portrayed on Figures 5 and 6.

For this update the new fisheries data format shown in Figures 3 through 6 is for one year's data only as noted in each. Given the new data format (i.e., classes of landed weight by species), it may not be feasible to construct maps that group these data over a several year period to demonstrate the ongoing patterning of fishing activity as has been the case in the past (e.g., Figure 2 in this update).

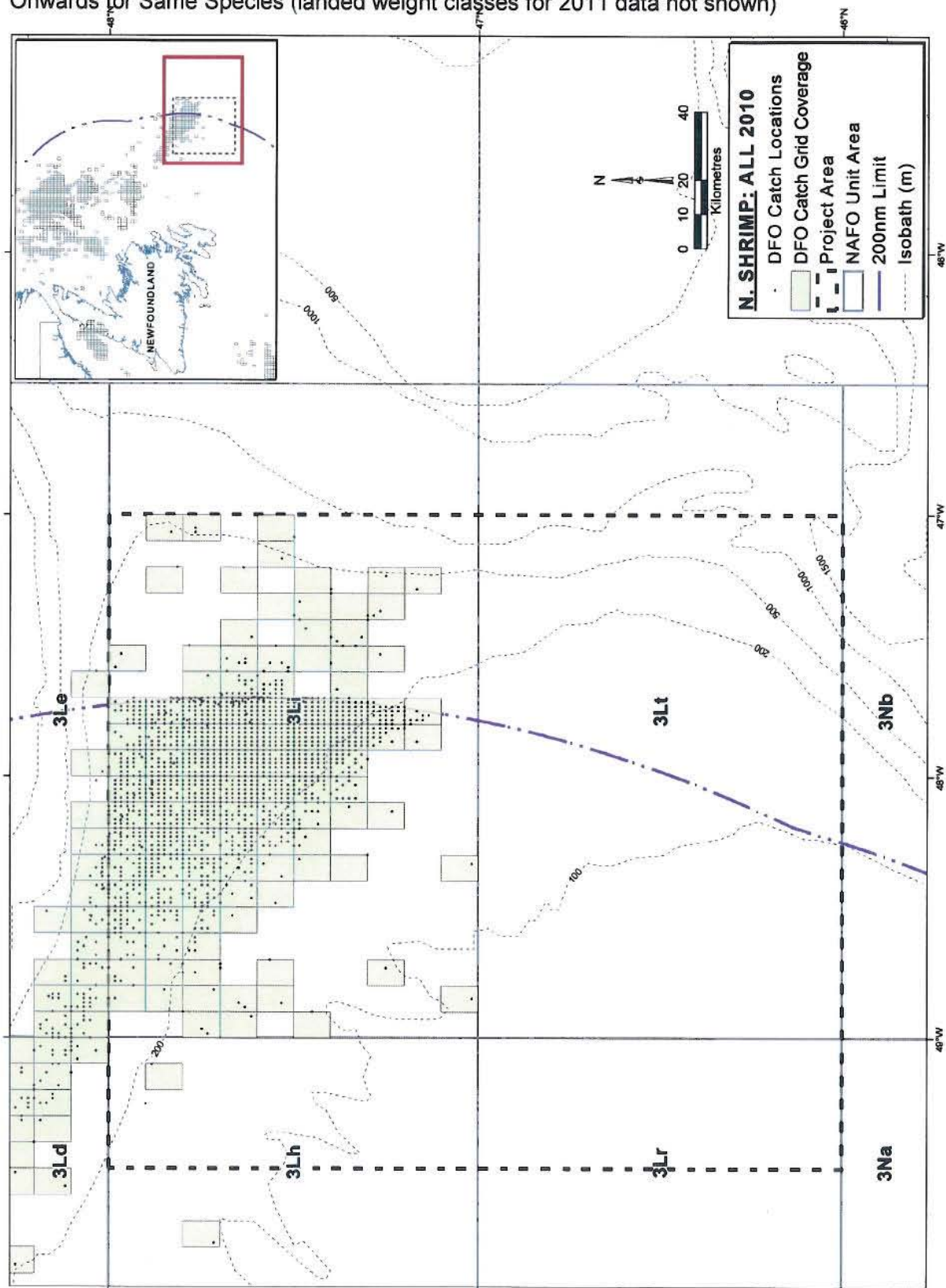
While the patterning of fishing relevant to this assessment is seen to be generally the same over years, the following paragraphs note some points relevant to the interaction between the oil and gas and fishing industry within the scope of this environmental assessment.

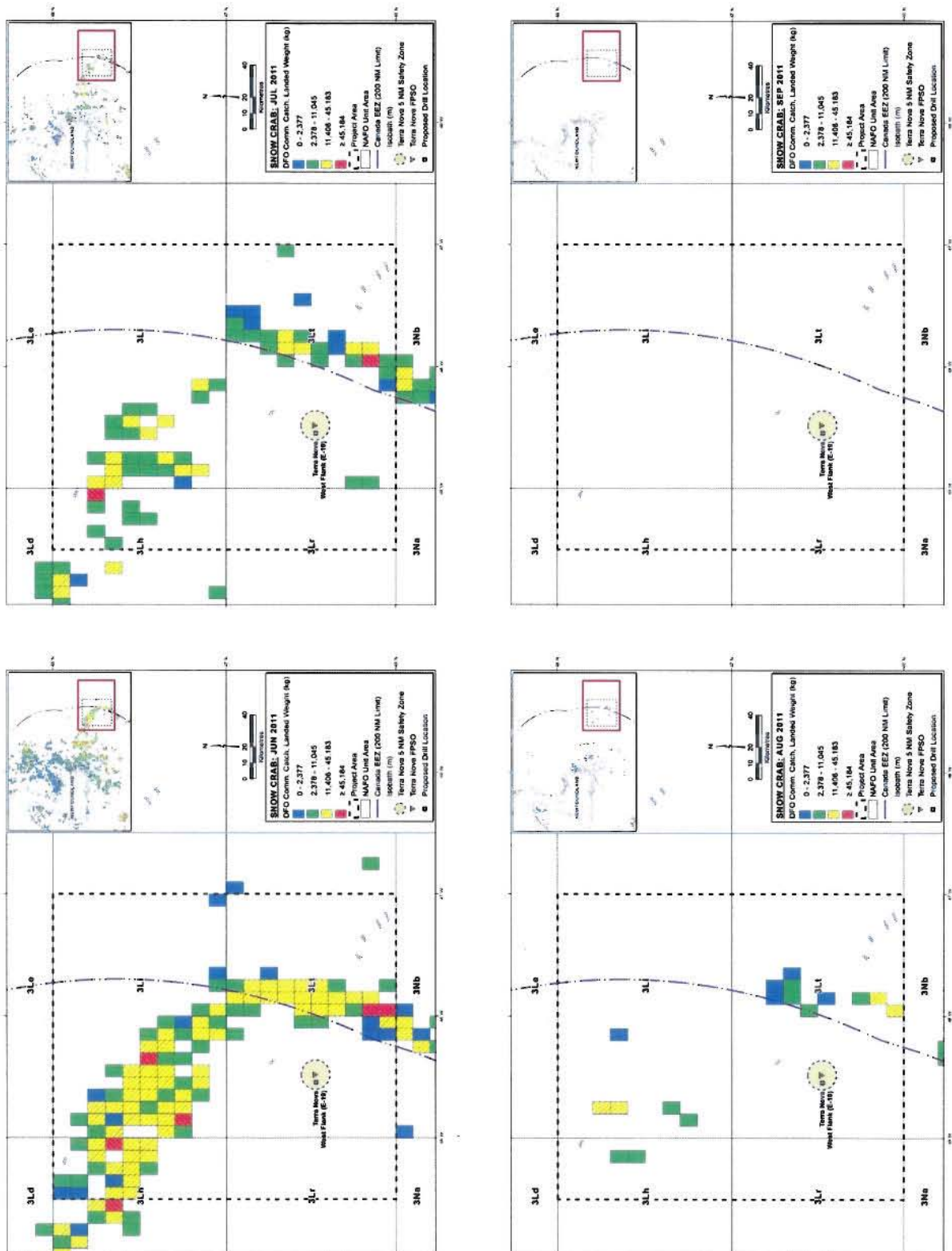


**Figure 3:** Overlay of 2010 Snow Crab Catch Location Data with New Data format for 2011 Onwards for Same Species (landed weight classes for 2011 data not shown)

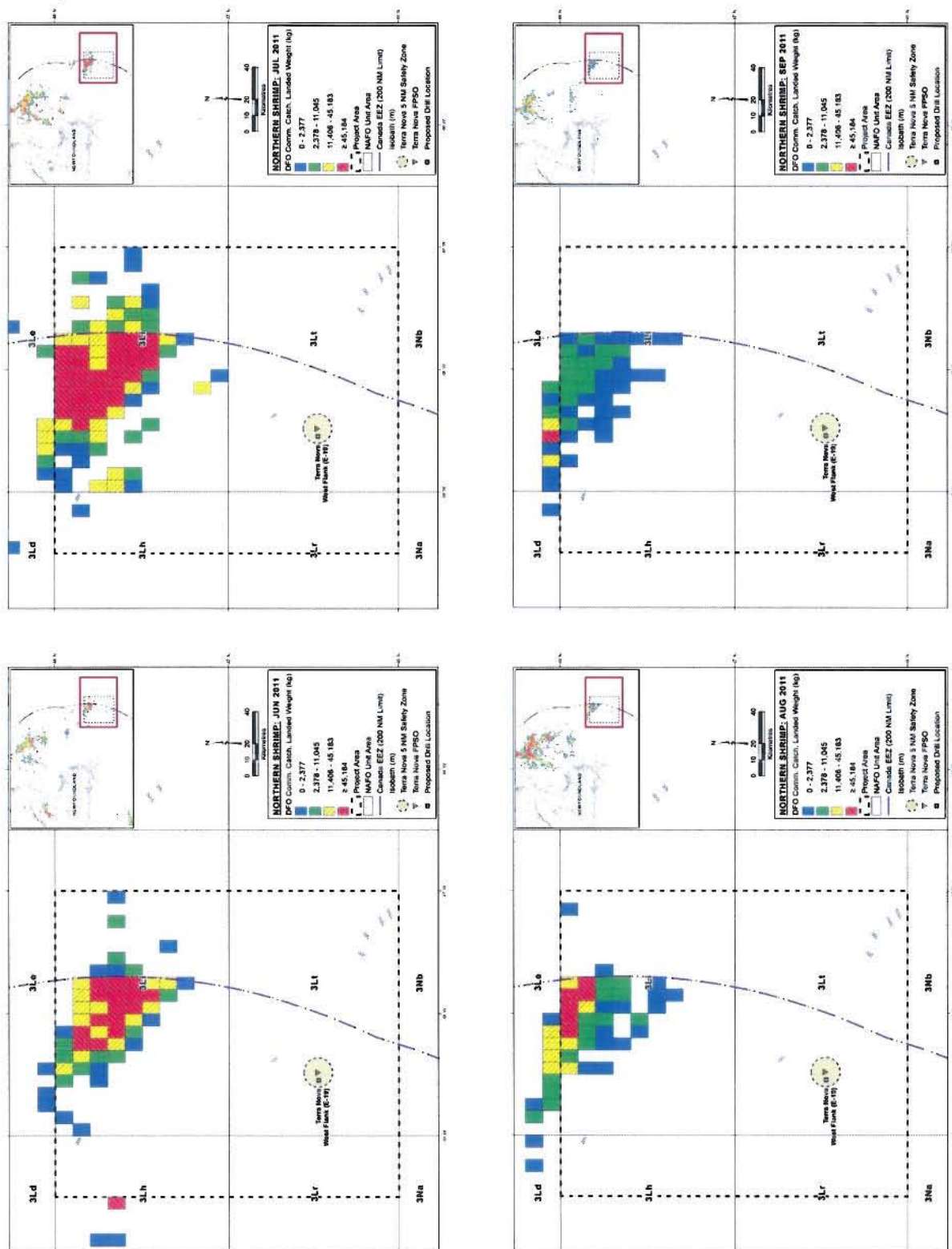


**Figure 4:** Overlay of 2010 Northern Shrimp Catch Location Data with New Data format for 2011 Onwards for Same Species (landed weight classes for 2011 data not shown)



**Figure 5: Distribution Pattern of Landed Weight Data for June - September 2011 for Snow Crab**



**Figure 6: Distribution Pattern of Landed Weight Data for June - September 2011 for Northern Shrimp**

Discussions were held in July 2012 with the Fish, Food and Allied Workers Union (FFAW) and One Ocean to review the proposed drilling program and determine if there were any concerns for the fishery arising from the 2012 drilling program. Given the location and timing of the well, no issues of interference with fishing activities were identified from the perspective of the FFAW (Note: The FFAW and One Ocean were also consulted prior to conducting the Terra Nova West Flank clearance survey in June 2012). Since E-19 was not drilled as expected in 2012, One Ocean and the FFAW were contacted again in June 2013 to ensure that no new concerns had arisen with respect to this program. To date, no such concerns were brought forward.

Similarly, during 2012 input from Ocean Choice International (OCI) indicated OCI has no issues with the proposed Terra Nova West Flank drilling operation (pers. comm., R. Ellis, OCI, August 2012). The only change since that time is the pursuit of a yellow-tail fishery south of the Terra Nova field but as this fishery is some 60 nautical miles south and west of the drilling location no conflict is foreseen. OCI was contacted again in June 2013 to ensure that no new concerns had arisen with respect to this program. To date, no such concerns were brought forward.

Suncor understands that it is important to recognize that harvesters fish a resource, and not fixed points from year to year. Licenses are issued for large areas (e.g., NAFO Subdivisions 3K or 3L) and fishing activity could take place anywhere within these areas and not just at the pattern of locations fished in recent years indicated in the DFO database. Hence this requires that the operator should continue to consult with the fishing industry on a regular basis to keep up to date with trends in fishing from year to year.

Mitigation measures for moving the Henry Goodrich MODU into position will be determined in accordance with the risk management measures developed by the oil and gas and fishing industries under the auspices of One Ocean.

With regard to the conduct of seismic surveys, Suncor will continue to keep fishing interests informed of these activities during the operational planning phases. This is done through the established One Ocean and FFAW contacts and others as deemed necessary or as advised.

### 5.3 Species at Risk

An updated summary of SARA listed and COSEWIC designated species for the Grand Banks area of relevance to this assessment is provided in Appendix A. SARA listed species with final recovery strategies in place are noted. None of the SARA listed species relevant to the scope of this assessment have an associated critical habitat description or an action or management plan in place. It is noted however, that the North Atlantic Right Whale does have a critical habitat statement pursuant to SARA; however, it is rare in the study area



considered under this environmental assessment (see Appendix A – footnotes). Appendix A also provides a listing of COSEWIC candidate species under assessment.

Since the last environmental assessment, Sowerby's Beaked Whale was added to SARA to Schedule 1 (Special Concern) from its prior listing on Schedule 3 (Special Concern). Also, some species tracked for the purpose of this update have changed their status under SARA and COSEWIC as indicated in Appendix A. Specifically, the northeastern population of Atlantic Salmon has been deemed not at risk; the Cusk has been upgraded to endangered pursuant to COSEWIC

None of the recovery plans for SARA listed species in place materially change the mitigation measures currently committed by Suncor for the scope of the operations addressed by the environmental assessment.

#### **5.4 Mitigations**

Suncor regards the environmental predictions and mitigations cited in the environmental assessment, and subsequent significance determination that relates to CEAR No. 08-01-42400, as still valid. Suncor re-commits to implementing these mitigation measures for the activities to be carried out under the scope of this assessment.



## 6.0 CONCLUDING STATEMENT

The activities Suncor plans to carry out during the next twelve months have been reviewed and assessed to be within the scope of the environmental assessment currently in place to address those activities, specifically:

- the scope and nature of activities planned and addressed under the approved environmental assessments have not changed;
- the nature and extent of the fishing activities being undertaken in the Project Area have been validated and have not changed such that project activities pose any potential effects not previously assessed; notwithstanding this the form in which Fisheries and Oceans Canada provides data to third parties for environmental assessments has changed as described previously in this update;
- the nature of the species at risk in the Project and Study areas have been validated; Sowerby's Beaked Whale was added to SARA to Schedule 1 and some species have had changes in status pursuant to SARA and COSEWIC listings as noted in this update. However, none of these changes engenders any changes to the mitigation measures provided for in the environmental assessment of this project;
- the mitigation measures defined and committed to in the environmental assessments are still valid and will continue to be implemented; and
- Suncor continues to consult with stakeholders directly affected by the activities planned under the approved environmental assessments.

Suncor considers the environmental effects predicted in the environmental assessments to remain valid. Suncor reaffirms its commitment to implement the mitigation measures proposed in the assessments and in the Screening Decisions made by the C-NLOPB in consultation with other Federal and Provincial regulatory agencies.

## 7.0 REFERENCES

### 7.1 Original Suncor Environmental Assessments and Updates

- Christian, John R. 2008. Environmental Assessment of Petro-Canada Jeanne d'Arc Basin Exploration Drilling Program, 2009-2017. LGL Rep. SA993. Prepared by LGL, St. John's, NL prepared for Petro-Canada, St. John's, NL 258 p. + Appendix.
- Christian, John R. 2009. Environmental Assessment of Petro-Canada Jeanne d'Arc Basin Exploration Drilling Program, 2009-2017 Addendum. LGL Rep. SA993. Prepared by LGL, St. John's, NL prepared for Petro-Canada, St. John's, NL 22 p.
- LGL Limited. 2006. Environmental assessment of Petro-Canada's vertical seismic profiling program at the Terra Nova Development. LGL Rep. SA890a.

Rep. by LGL Limited, St. John's, NL, for Petro-Canada, St. John's, NL. 92 p + appendix.

- Suncor 2010, Suncor I&O East Coast Operations Newfoundland & Labrador Offshore Area Environmental Assessment Review for 2010. Doc. No. TN-PE-EC15-X00-155.

## 7.2 Species at Risk Recovery Strategies

- Atlantic Leatherback Turtle Recovery Team 2006. Recovery Strategy for Leatherback Turtle (*Dermochelys coriacea*) in Atlantic Canada. Species at Risk Act Recovery Strategy Series. Fisheries and Oceans Canada, Ottawa, vi + 45 pp
- Beauchamp, J., Bouchard, H., de Margerie, P., Otis, N., Savaria, J.-Y., 2009. Recovery Strategy for the blue whale (*Balaenoptera musculus*), Northwest Atlantic population, in Canada [FINAL]. Species at Risk Act Recovery Strategy Series. Fisheries and Oceans Canada, Ottawa. 62 pp.
- Brown, M.W., Fenton, D., Smedbol, K., Merriman, C., Robichaud-Leblanc, K., and Conway, J.D. 2009. Recovery Strategy for the North Atlantic Right Whale (*Eubalaena glacialis*) in Atlantic Canadian Waters [Final]. Species at Risk Act Recovery Strategy Series. Fisheries and Oceans Canada. vi + 66p.
- COSEWIC. 2012. COSEWIC assessment and status report on the Leatherback Sea Turtle *Dermochelys coriacea* in Canada. Committee on the Status of Endangered Wildlife in Canada. Ottawa. xv + 58 pp.
- DFO (Fisheries and Oceans Canada). 2008. Recovery Strategy for the Atlantic walrus (*Odobenus rosmarus rosmarus*), Northwest Atlantic population, in Canada. Species at Risk Act Recovery Strategy Series. Fisheries and Oceans Canada, Ottawa, ON. x + 11 pp.
- Kulka, D., C. Hood and J. Huntington. 2007. Recovery Strategy for Northern Wolffish (*Anarhichas denticulatus*) and Spotted Wolffish (*Anarhichas minor*), and Management Plan for Atlantic Wolffish (*Anarhichas lupus*) in Canada. Fisheries and Oceans Canada: Newfoundland and Labrador Region. St. John's, NL. x + 103 pp.



Current<sup>2</sup> SARA Listed and COSEWIC Designated & Assessed Species in the Suncor Project Areas<sup>3</sup>

		Since Last Update							
Species		Drilling	SARA Status noted as Schedules 1, 2 or 3			COSEWIC Status			
Common Name	Scientific Name		Endangered	Threatened	Special Concern	Endangered	Threatened	Special Concern	Candidate <sup>4</sup>
<b>Birds</b>									
Ivory Gull	<i>Pagophila eburnea</i>		1			X			
<b>Marine Fish</b>									
Northern wolffish	<i>Anarhichas denticulatus</i>			1			X		
Spotted wolffish	<i>Anarhichas minor</i>			1			X		
Atlantic wolffish	<i>Anarhichas lupus</i>				1			X	
Atlantic cod	<i>Gadus morhua</i>				3				
Atlantic cod (NL population)	<i>Gadus morhua</i>					X			
Atlantic Salmon (northeast NL population)	<i>Salmo salar</i>	Not at Risk							
Porbeagle shark	<i>Lamna nasus</i>					X			
White shark	<i>Carcharodon carcharias</i>		1			X			
Roundnose Grenadier	<i>Coryphaenoides rupestris</i>					X			
Cusk	<i>Brosme brosme</i>	Status +				X			
American Shad	<i>Alosa sapidissima</i>								MPC
Alewife	<i>Alosa pseudoharengus</i>								MPC
Capelin	<i>Mallotus villosus</i>								MPC
Haddock	<i>Melanogrammus aeglefinus</i>								MPC
Shortfin mako shark	<i>Isurus paucus</i>						X		
Blue shark	<i>Prionace glauca</i>							X	
American Eel	<i>Anguilla rostrata</i>						X		
Roughhead grenadier	<i>Macrourus berggla</i>							X	

<sup>2</sup> May 2013<sup>3</sup> Green Shade means a final Recovery Strategy is in place but no Critical Habitat has been identified nor have Action or Management plans been finalized for these species with the exception of the North Atlantic Right Whale (see footnote 7). Note that two other species that have recovery strategies, the Atlantic Walrus and Grey Whale, have been extirpated from Eastern Canadian waters and therefore are not listed in the above table.<sup>4</sup> Candidate COSEWIC species are classified as High (H), Medium (M) or Low (L) Priority Candidate (PC) species



Species		Since Last Update	SARA Status noted as Schedules 1,2 or 3							COSEWIC Status			
Common Name	Scientific Name	Drilling	Endangered	Threatened	Special Concern	Endangered	Threatened	Special Concern	Candidate <sup>4</sup>				
Bluefin Tuna	<i>Thunnus thynnus</i>					X							
Spiny eel	<i>Notacanthus chernitzi</i>												MPC
Pollock	<i>Pollachius virens</i>												MPC
Spinytail Skate	<i>Bathyraja spinicauda</i>												MPC
Ocean pout	<i>Zoarces americanus</i>												MPC
American Plaice (NL pop.)	<i>Hippoglossoides platessoides</i>						X						
Acadian Redfish (Atlantic pop.)	<i>Sebastes fasciatus</i>						X						
Deepwater Redfish (Northern pop.)	<i>Sebastes mentella</i>						X						
Spiny Dogfish	<i>Squalus acanthias</i>							X					
Basking Shark	<i>Cetorhinus maximus</i>							X					
<b>Marine Mammals</b>													
Blue whale	<i>Balaenoptera musculus</i>		1			X							
Humpbacked whale	<i>Megaptera novaeangliae</i>				3								
North Atlantic right whale <sup>5</sup>	<i>Eubalaena glacialis</i>		1			X							
Fin whale (Atlantic pop.)	<i>Balaenoptera physalus</i>				1			X					
Killer Whale (NW Atlantic population)	<i>Orcinus orca</i>							X					
Sperm whale	<i>Physeter macrocephalus</i>												LPC
Cuvier's Beaked Whale	<i>Ziphius cavirostris</i>												MPC
Northern Bottlenose whale (Davis Strait/Baffin Bay/Labrador Sea)	<i>Hyperoodon ampullatus</i>				3								
Sowerby's beaked whale	<i>Mesoplodon bidens</i>	Status +			1			X					
Harbour porpoise	<i>Phocoena phocoena</i>			2				X					
Hooded seal	<i>Cystophora cristata</i>												LPC
Harp seal	<i>Phoca groenlandica</i>												LPC

<sup>5</sup> A critical habitat statement exists for this species however, it is rare in the study area considered in this assessment with one sighting of two individuals recorded in the DFO cetacean database.

		Since Last Update										
Species		Drilling	SARA Status noted as Schedules 1,2 or 3					COSEWIC Status				
Common Name	Scientific Name		Endangered	Threatened	Special Concern	Endangered	Threatened	Special Concern	Candidate <sup>4</sup>			
Ringed Seal	<i>Pusa hispida</i>										LPC	
Reptiles												
Leatherback sea turtle	<i>Dermochelys coriacea</i>	Status Change <sup>6</sup>				X						
Loggerhead sea turtle	<i>Caretta caretta</i>					X						
Kemp Ridley's sea turtle	<i>Lepidochelys kempii</i>										LPC	

<sup>6</sup> In May 2012 the Atlantic Population of the leatherback sea turtle was recognized as a separate entity.