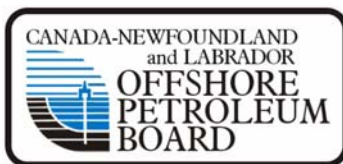
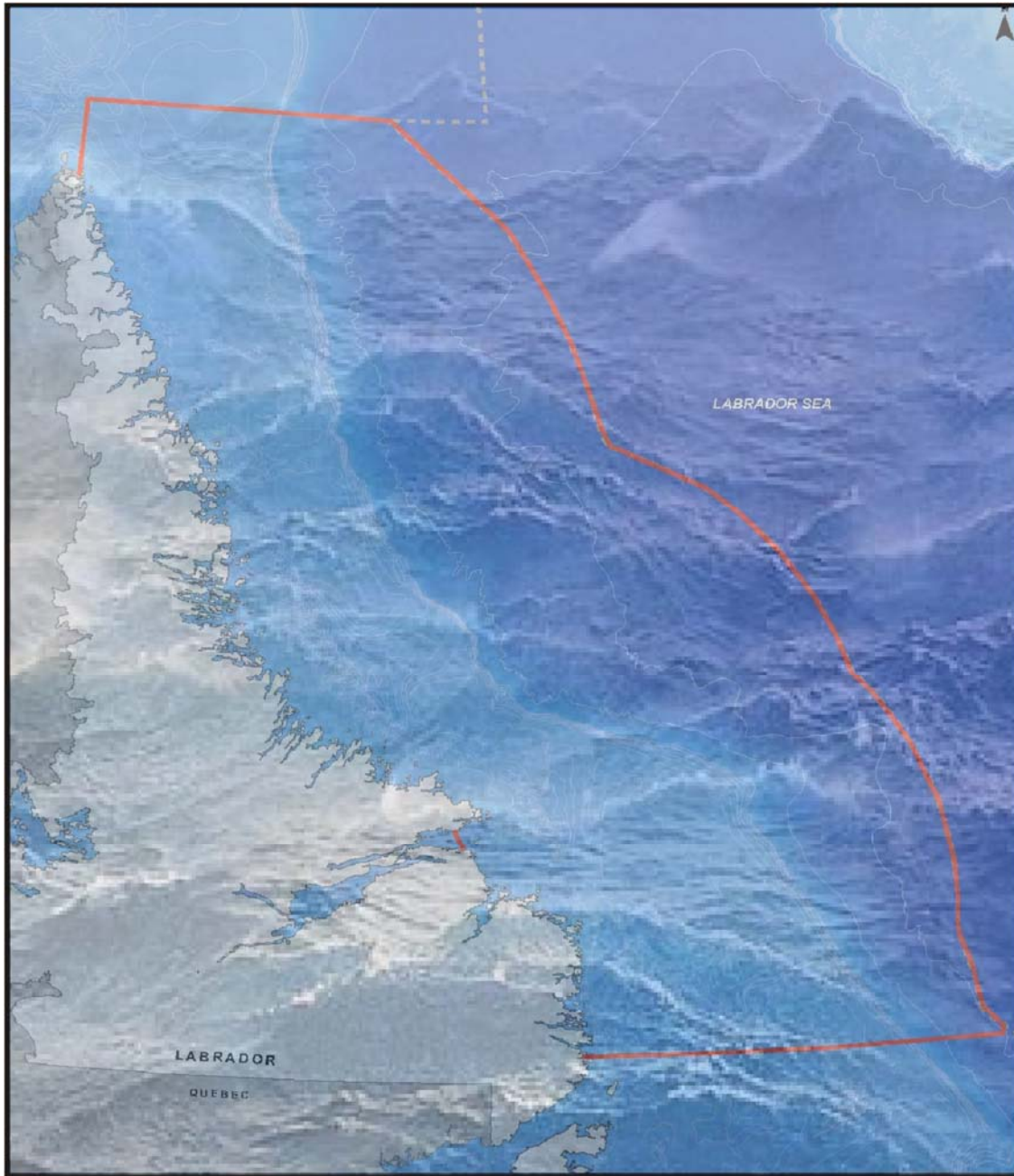


STRATEGIC ENVIRONMENTAL ASSESSMENT LABRADOR SHELF AREA



Summary Document Innuaimun Translation

Eishi Uauitakant Tshakuan

1.0	Tsheuauitamakunau Etistet.....	3
1.1	Tsheitshitapatakant mak tsheuapatinikunau uantumeskakant tshekuan ute Labrador.....	5
1.2	Tsheishinakatuentakant ne eshinakuak tshekuan.....	5
1.3	Auen uaiat nenu tshekuanu	5
1.4	Uastenipamakapimi eishi meskuakant ute Labrador nete tauets.....	6
1.5	Kauauitamatshets tshekuanu.....	6
1.6	Tan tsheishi apatshitakuau	7
2.0	Tsheishi nitumeskakant ashini, assi mak netamuk tshekuan ute tshetutakant.	7
2.1	Tan eishi nitumeskakanitau.....	7
2.2	Tshetakuat tshekuan tsheustipekutits tsheatussenanut	8
3.0	Tan espint assi nte tampekuts mak nipi enispinit.....	8
3.1	Kanitussenitak assinu enispinit mak enanamiskuet	8
3.2	Shiupun enispint.	9
3.3	Neneun eshitshitets	9
3.4	Miskumi Enispint.....	9
4.0	Aueshishats Kantussenimakanit mak enispinit.....	10
4.1	Kantussenimakantshi aueshishats mak tshekuan enitautshik.....	10
4.2	Tampekuts Kapimutets aueshishats	10
4.3	Nameshats.....	10
4.4	Mastemekuts mak teteu mak atshukuts eshinakushets.....	12
4.5	Uapuskuts.....	13
4.6	Netamuk eshinakushets shushipets.....	13
4.7	Kakashuka shanapats ete.....	15
5.0	Nash uatapuananuts essishuenanut.....	17
5.1	Tshemisteuauitakantshi tsheitishanikants tshekuan euauinakant uastenipamakannipimi mak pimi.....	17
5.2	Tan eshinakuak enispinit tshkuan tsheeka minupintshi.....	18
5.3	Tan tshetshi mishinanikanitau tan tshenispinitakants tshekuanu	19
5.4	Themamitunentakant	19
5.5	Masten tshekuan tsheuauitakant	20

1.0 Tsheuauitamakunau Etistet

Ute kanata Nfld mak labrador kanutshikak tshekuanu nete tauts eukun uinuau utatuseunuau. Uin tsheutshimau ute kanata mak tsheutshimau ute Nfld mak Labrador uin kanutshikak nipits tshekuanu. Ne-C-NLOPB's tshika takunu tshetshi nakatuapatshets mak uauitamuatshets tshe ettu minu nakatuenitakanits tshekuanu tsheeka nanuuitakanits mak mamu tshetshi uauitshitunanits eatussenanuts nenu enutshikuant pimi nete napuatua tauts kaiatussenanut.

- Kaatusseshets tsheminu nakatuenimakanits.
- Mak tsheuiminu nakatuenitakant ne essi pikunikant tshekuan nete eatussenanut.
- Mak tsheessi uapatinuenanut ne essi pikunikant assi.
- Mak espishant ne tshekuan enutshikakant mak tsheetutet etauatshenanut.
- Canada, NL, mak napuatua tan tsheissitshishikashuts.

Kauauitamatsheshets ama tshika uauitakanu passé nenu tante muku nass miste uauitakanua nenu kaiatusseshuts mak e miste pikunikant tshekuan nete nipits etakuats.

Uinuau C-NLOPB shash nitussenitamupants nenu tsheishi papanitakuau ne pepemau eshinakutakuau mak eishitshitapatats. Neta 2007 uinuau C-NLOPB shash tshishipinipants tsheishinakutakuau nete Labrador tauts espishant nipinu.

Tapitu kaiatusseshets peikunu tatishuts uanishinakutats nete uaminats federal mak provincial tsheutshimaua kaiatuskuantshi ne kutakuts kaiatussests nete kanutimenanuts kauauitshiats mak meu uin tsheutshimaua kaiatuskuat uin shash uiuauitshieuts nenu C-NLOPB tsheishinakutakuau nenu eshinakunits. Shash katapuetuat nenu C-NLOPB mak Nunatsiavut tsheutshimaut.

Ume katutakant mishineikan kauauitakant tshekuan shash tutakanipan ne C- NLOPB (www.cnlopb.nl.ca) uintussenitamekue neunauitakant mishinanikentshuapit. Ume tshekuan unauitakant shash ushitakanipan mishineikan mak eishimeskuakant pimi ute Labrador mak eishi tshinuatshitakant assi ne emeskuantshi pimi.

Ume uantussenitakant tshekuan shash mesheneimupant mak estinuatshitakant ne pimi tsheishiutinakant mak mishineikant tan espishat ne etutakant mak tshetananut.

Ume uauitakanua

- tshepukunenitakant uantusenitakant tshetukuak
- tsheapastakantshi tshekuana nete nipits
- tsheapastakantshi tsheishipimpitakant
- tan tsheishinakuak tshitutakantshi

Ume uatutakant shash mishineikanu nete assi mishineikanit tan tsheishi utinakant pimi tshi peikunu tatuputshe. Ume eishi uauitakant tshika unuepanu mishineikan tshi petetash pupunutshe ne uaushinakutakant.

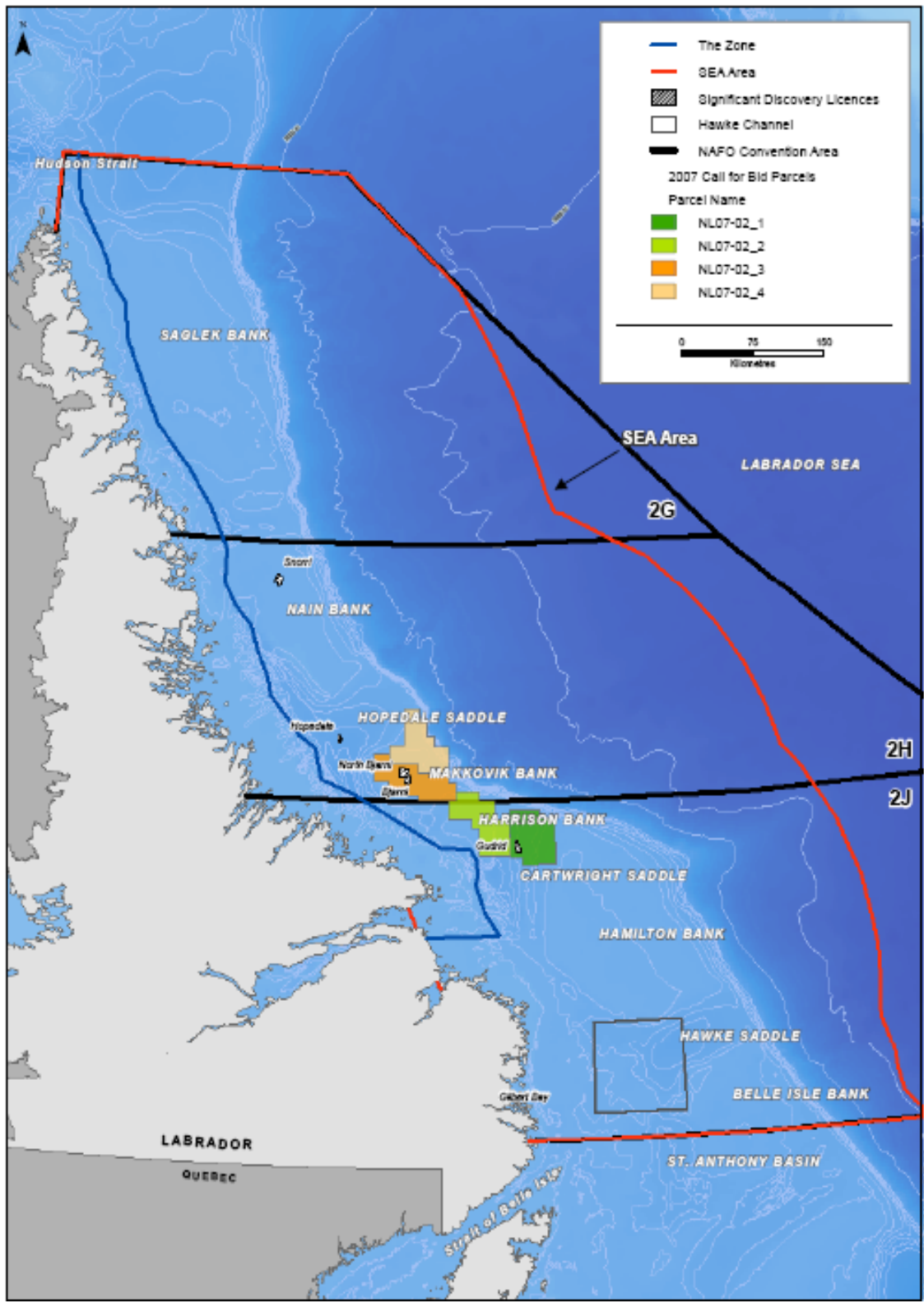


Figure 1.1 Labrador Shelf SEA Area Strategic Environment Assessment Area

1.1 Tsheitshitapatakant mak tsheuapatinikunau uantumeskakant tshekuan ute Labrador.

Uin (sea) Kaishi uapatats shash uauitamuts tan tshenispishitats tshetshi peshinakutauts eushitakuau nenu tsheishinakutats. Uinuau Sea Katutakuau

- tapuetau tan tsheushinakutats mak tsheishipimpinitatau tshenistunakunits
- mak tshenakatuentakau tan etitshitakanits nenu tshekuanu essi unauitakanits
- mak tshetshi uauitshiat nenu etutakanits kamiste uauitakanit emishinanikanits
- mak tshetshi uauitshiat tshetshi miste mishants atusseunu etshishipanits.

Ume eshinakuats kauaitakant ute SEA tshetshi uitshinikuts uinuau C-NLOPB tshetshi:

- ueuetenitakuau put mak ke tsheukaminants mishiue tanatshe put kie tataue Sea.
- ueuetenitakuau tan espishitakuau nenu tan espish utinakuau tshisthistinuatshitakuau nenu pimina nta tsheuts utinakuau nete Sea

Uinuau nte Napuatua Aissimeut Kaitussenanut (LISA), ne C-NLOPB mak Nunatsiavut tsheutshimau uinuau tshika ueuenitamuts mamu tshetshi utinakuau.

Katshi mesketau mak tshishitakuau uinuau nitussenitamuts C-NLOPB tan tsheishinakutatau mak tsheishitshitapatats nenu uaishinakutats nete Canadian Environment etutakanits CEEA. Ute Lbaraodor tauets kauitutakanits ama meu muku tsheueueshitats mak tshetshi eka miskutinats nenu uaishinakutakanits kauaitakanits.

1.2 Tsheishinakatuentakant ne eshinakuak tshekuan

Nenu nash uatapuekuau uinuau Sea nash tshekuui nistuapatamuts eshinakanits tshekuanu mak tshe miste nakatuentakanits mak kie tsheuuapatinuets tan pan ishi miskutinamuts mak kie nash uitapaienitatuts nenu uaitishumitatuts eshimishinanikanuts nenu tsheistnuatshitakanits mak nenu uatutatau nete Labrador tauets Sea katutakanits estinuatshitatau.

Ume eshinakutakant shash miste nakatuenitakanu ne tsheeshinakuak tshekuan.

Nishuatash tatin ume uanutshiakant tsheishitshitapakant

- **tampekuts aueshishats katats put kie namesh**
- **ntamuk namesh eshinakust etat**
- **kanutimeshets**
- **ntamuk pineshishats eshinakushet etat nipits**
- **kamamishitits aueshishats etats nete tampekuts**
- **mak aueshishats etats nete tampekuts kakustinitunanuts**
- **mak kakashapauani tshekuana mak ete kestiuatshitakanua**

Uinuau SEA tshekauuapatamuts nenu tsheishinakutakanits nete tauets kuuinutshikakanuau nepits nete tauets uin kauinutshikats epapeikushets VEC. Meu tshetshi pikunikant nenu uatutakant kie etenitakant mak tshika takuna tsheishishueanut.

1.3 Auen uaiat nenu tshekuanu

Uinuau C-NLOPB shash utinepants uenua tshetantshi essi tukuatshinits eshukum pupuna.

Auentshi eutinakanits shash uin etapuetak uin tshetshi nakatuenitak emishinaushunanits nenu uaiakanit mak nin etapuetak tshetshi tshitutakuau ume tutakanitshe.

Uinuau C-NLOPB shash esk tepentamut nenu esk uaiakanit tante tsheka piuenitakuau nenu assinu uautinakanits. C-NLOPB mak nin tshika utiman tan espish uaiatuau.

Ume napuatua shelf SEA katananutshash tshissentakanipant tantshetutakant nta ushkau pishum 2008 tsheshi kastinakanit. Ne tshetutakant shash punitakanu ne tshetshi tipentakant nta tshi neunu ashu petetash (45) tshikatshe tshe mishishinanikant.

1.4 Uastenipamakapimi eishi meskuakant ute Labrador nete tauets.

Nta 1960 shash uipats Meskuakanipan uastenipamakapimi ute Labrador. Nete uinuau ne kameskuats uin minakanipants tshetshi utinakuau ute Labrador nete tauets. Ume kauiutinakanit pimi uskassishipinananipant nta 1971 mak (28) tatina etakuatshi epukunepitakant nete tauets Labrador. Ume essi pukunepitakanuu espish 4.2 trillion cubic feet espish pukunenikant mak passe emiskuakant pimi muku patetash (5) tatina essi etatitshi.

Ume essi emeskuant nta 1970 mak espinish 1980 uin eukun muk pimi. Eukun eapits espish eshi atuskatakant ume epukunepitakant tan espinipan nta 1983. Eshi minukukant esi atuskatankant ut US mak Canada eukun uaishinakutakant emiskuantshe ne pimi ute Labrador.

1.5 Kauaitamatshets tshekuanu

Kauaitamatsheshuts tshika ushitauts mishinanikanu nenu etutakuau SEA mak eishi uaitshinikuts nete C-NLOPB kue nete Innu Nation, Nunatsiavut tsheitshimau, mak Labrador Metis Nation mak passe kanauenitakuau eishi itinikanits tshekuau.

Kauaitamatsheshats uinuau kanauentamuts nete utenaua auen uantutussets, kaitshipinitats tshekuanu mak eshinakushets auentshi mak uaitamuakanipants katsheniuts uipats etenitakuau.

Umeshash ntussenitakan uets tatakant nete mishiue ute napuatua nta uastessiu pishum espish ntapishimuss 2007. Ume tshetshi apatshitakant ne tshessiushitakant kuaitakant tshekuau. Ume nistan kauaitakant shash miste mishinanikanipan. Katshi nishuau uaitakant ne etushuenanut essishuenant mak tshika uaitam auen tant etenitak nenu etishuenanut kuauaitakanut nta shikunuts kamamuitunanut.

Kamamunakanits, ne kauaitamatsheshuts miste uaitshinukuts tshetshi nanistunakuau nenu eshinakutakanits mak uainakuau nenua kanutimeshentshi mak aeshishats kakantussenimatau auentshika nete tauets mak miste tshekuau kanutshikatau nete nipits tampekuts kanitautshinit ute Labrador tauets nipits katutakanits. Mishiue tshekuau uintussenitakanu tan eshi meshenanikant esk eka tutakant ete tutakantshe.

- ume tshekuana uaiakantshi shash takunipan ute Labrador tauets nete katats pemituteuts nta Hamilton mitshima Makupik kanutimeshenanuts
- eshinispant miskumi nete etutakant tshekuau
- etats aeshishats mitshima nete etutakanit tshekuanu
- etatshitau pepemau atshukuts etatau nete enitshikakanits tshekuanu
- namesh etatukuats eshinakushets eiapits mitshima tapants.

- Auentshé kapipamaunakanets eiapits tepants nete kutakanua tshekuanu mak shash mitshetipants nete Labrador tauets SEA etananuts

1.6 Tan tsheishi apatshitakuau

Eminakanit uinuau Nunatsiavut tsheutshimau shash tepentamupant ute Labrador aisimeut nenu assinu katapuetakuau kamishinaushut mak nenuats aisimeut mak innuts shash mishanipan utatusseunuau nenu uaishi pimpinitatau. Tapue tshitshue miste animinu nenu tshissenitakunit tan eishi apatshitakanits uaishinakutatau nete etaianits. Uintussenitamakue ume eshinakutakant tshika kukuetshimananut nenu uinuau eshinakutats.

Ume animak tshekuanu eshu tshitapamatats nenu etakunits.

- Ume ute miste kussenanu. Kanutimeshets enutshikuats ume auenua ueshisha eukun tau, pemituteut, tamikat, ueushu, shushashu, mestikuake eshuts kamuakanits, eshuts kamamishitits, eshuts kameskushets, uaua kaishinakutshi kakauatsh.
- Mak mistimekuts tauts nete etananuts ueuepitshuts eiapits uapamakanipants .
- Mak ministukua eiapits apastakanua tshetshi maushunanut mak etuapatakantshi uaua.
- Nutshipaustukueshishats tapants mak netamuk ueshishats kakustiananut eiapits tapants ete.
- Shishipats mak neskets nituiunanuts.
- Mishiue etapastakant shash mishiue takunipan ute Labrador tauets SEA etananuts.

2.0 Tsheishi nitumeskakant ashini, assi mak netamuk tshekuan ute tshetutakant.

2.1 Tan eishi nitumeskakanitau.

Tan eishi nitumeskakanitau ume tshekuana.

- Enitumeskakent eninipint assi: tan espishat assi espikat mak nitussenitakant mak etitakuak eatshipintshe. Shash takun utt uin tshenitumeskak tshenispinant.
- Enitumeskakent tshetshi ianuuiutakant nitussenitakant eninipant assi, mak akunikant ne tshetshi ishnakut tamatum tsheishinakuats emiste pikunikant assi mak epukunenikant.
- Enitussenitakant tan eshinakuak ashini. Tsheutinakant ashini tan eshukum epukunenikant assi nete tampekuts mak tan tshetshimitets tshekuan nete tauets ne uatukants.
- Pukunentshenantshe-tshika ishinakun miam eutimakant ne pimi.

Nete eshipukuntshenanut ute mamit Canada shash uapatinuepants tan tsheishinakunits nenu

tutakanitshe (i) neshekueapina tshika apatshitakanua., (ii) tampenkuts tshepimpinitakant tshekuan uets pukunentshet, (iii) utt tsheka mishau uin uts tshepukunentshet. Umenua tsheapastakantshi eshinakuaki mak tshen itimit nipi tshetipanikant mak tsheishi nitussenitakant ne eshimatshishikatshi mak miskumi tan ispush pakatit.

Ume kuuipukutshenanua takun mishiue tshekuan tshentapitshitakant nete uttits mak eiapits tshika tauts kauauastatsheishats mak mitshena utta tsheapastakanitshi tshepetautashuts.

Ume kuuipukutshenanua takuan eiapits tshekuana tshetshi minu nakatuenimitishunanut eka ushikushinanut. Eukun eiapits shash ishinakutakanu neunu(40) ashutastatinu (60) tshishikaua tshessi atuskatakant. Ume shash pishashu etananut (0.5 km²) mak 500 m tshessi nispishat tshepunishinatets. Ume kuuipukuneputakanua. Mishiue auentshe eatussets minakanuts nenu emishinanikestents tshetshi ketshestinuapatakuau mishiue eatusseshets mak kakusseshets utta.

2.2 Tshetakuat tshekuan tsheustipekutits tsheatussenanut

Tsheustipekutits tshekuan mak kutak tshekuana tshetshi apatshitakant ute Labrador tauets SEA kaatussenanut ume tshetutakantshe emiskukant pimi mak uastenipamakanipimi shash uinuau tapuetamut ne C-NLOPB. Ume kamiste atuskatakant tshetshi apastakanut ute Labrador tauets tshe apatshitakuau mak tan ispush tsheutinakuau nenu uets utinakanitshi uastenipamakanipimi mak pimi.

Enkume tan eshitutakanipan ute Newfoundland.

- Tan espishat nete tshekuan uets ustipekutits mak tan tsheishi tshimitet nete tampenkuts mak ustipekutits .
- Ume kaustipekutit mak astashuantshuap mak utta tshekuaiashunanut mak tshika miste mishau utta tshetshi apatshitakant.
- Nenu pimi tsheutanikant mak utitshina tshetshi mamunakant tshiutatanikant . Ume tsheuts utatanikant tshetshi apastakant ne pimi tshemamunakant mishiue tshetapinuakant mak tshemushauatishinakant nte kueste tsheutinakant.

Nash tshika uishutshiut tshetshi nistutatishut tan etutakuau mak tan ne miskumi mak katsheshukuts espitits nete Labrador uatutakant, tan eishinakutakant mak tan tshenispishitakant mak miskumi tshetshi nakatuapamakant.

3.0 Tan espint assi nte tampekuts mak nipi enispinit.

3.1 Kanitussenitak assinu enispinit mak enanamiskuet

Ne espish temit nipi mak nispish tampenkut shash takunipan nete ut Labrador tauets assi nitussenitakant ne espishats ashini tan eshinakuak nete tamatum. Ute Labrador tauets SEA katananut shash nakatuentakanu tshe eka nanamiskuet nete assinu tampekut.

Ute Labrador tauets 150 km espishat etshinuapekak essi timit 70 m mak 2km nete nashipetamit eatussenanut, takun ekuanipeat nete mamit tshiuetinut natamit mak nete nanem mak enispaiakunikant nipi essi timit 200m. Mak passe 3000m essi enispaiakunikat nipi ishinakun mashten. Ute Labrador tauets tshika neu uets tshika ishinakutauts tsheatuskatatau mitshima nashipetamit, enikuashint, eminunekaust, eshakuaneakats, mak etshinushekaunekats mak eushetaukak nete eatussenanuts.

3.2 Shiuapun enispint.

Shiuapun essi tatshikamak ute Labrador miste tatshikamu mushinau nete tshiuetinut mak 0°C nash miste takau epuputshi mak 10°C enipaki.

Mak miste mamishituts eskets manakaiki 9.63m espish 10 pupun emiste makaiki 12.36 m easpitits eskets.

Mak tshitshue miste nuin 25.40meters/second 31.02 meters/second essi peikunu (10) pupuna makpeikutashimitunu (100) essi puaki.

Ume Labrador eshipampint shiuapun nete uets ueskassishipant nete Davis Strait mak et mamupant West Greenland eshipampint, Baffin Island eshipampint mak kuet tshiuapint nete Hudson Bay. Kuet papint ute Labrador. Nishuets ishinakun nashipetamit mak tauets epipant.

Ume 3.1 centimeters/second essi miste tshepant mak 35.1 centimeters/second eukun etuish miste tshuskaiatshun nete emiste timits nete etshinekaunukats tshets natikamepant nte nashipetamits.

3.3 Neneun mak nipits etakuats

Ne neneun essi tshitet neteassits etutakanut tshitapakanipan tshetshi miste nakatuapatakant mak nete assits etshitet.

Nete nipit eapuakamitet ute napuatua shelf sea ettu tatshikam nete mamit napuatua -2°C to 0°C Cessi epeiku 0°C epaputshi mak enipaki 10°C essi takatshikamak.

3.4 Miskumi Enispint

Uets uskassishipant emiskutit nta takuatshipishum nete tshiuetinut nespish pishumuss nta nanem espish miskumiut nta shakuaki, pakupintshi miskumi nespish iapashut nta tshetan pishuma. Miskumi patush punipan epapamakut nta Uapukun pishum mak Tshetan Pishum nete nenem amk Tshetan Pishum mak Upau pishum nete Tshiuetinut.

Ne espikitat ne Miskumi uta eukun 1.5m espish 14- 17m.

Ne katsheshukut uanu eiekutshinuts nta Tshetan Pishuma mak Uastessiupishuma kue etapukuts nete tshiuetinut mak kue tispinit nete nanem ete Labrador etshiuapukuts.

Katsheshukuts tshitshue mamishituts eukun 16m mak espish 120m.

Ume katsheshukuts espitit miskumi eukun miste kutapinuts 1.98m eukun espish timit nipin. Mak 6m in 145m essi akutshint.

4.0 Aueshishats Kantussenimakanit mak enispinit

4.1 Kantussenimakantshi aueshishats mak tshekuan enitautshik

Ume Kantussenimakanits aueshishats mak enispinit eukun unauinakanits ute Labrador tauets SEA eatussenanuts.

- Atlantic namesh kamamishantshi uipata
- Northern (Tshiuetinut) namesh kamamishantshi uipata
- Spotted namesh kamamishantshi uipata
- Barrow golden eye mishikus
- Eskimo Curlew — shesheshu katshinikutest
- Harlequin duck- nutshipaustukueshish
- Ivory gull- tshinask
- Peregrin Falcon- Uapekanu
- Blue whale- Kauasheskunits mistimek
- Fin whale- Katshinushet mistimek
- Leather back turtle- Kamiskushet teteu

4.2 Tampekuts Kapimutets aueshishats

Aueshishats tampekuts katats eukun eapits eukun anishueskashu, pemituteu, eshuts kamiskushets mak anikissa tshekat ishinakushu. Ume ueshishats etats ute tampekuts tshitshue mishiue tauts nete uets shiuaputs epipampinit umitshumuau mak essi miste timints mak etshiskaiashunits eukun tepants mak uetshipanits umitshumuau.

4.3 Nameshats

Ume aueshishat etakuau ute Labrador tauets SEA Katanut.

Namesh eshinikatakanit

American Plaice- pepekatishu eshinakust mak mikushiu pishish

Artic Char- shushashu

Atlantic Cod- Ueushu

Rock Cod- Tamikat

Capelin- Keskemekush

Snow crab- Pemituteu

Spider Crab- Pemituteu tukuats eshinakust

Yellow tail flounder- Pepekatishu

Greenland Halibut (Turbot) Pepekatishu

Roughhead Grenadier- Mestikuake

Silver hake- Ueushu tshekat ishinakushu

Atlantic halibut- Miste Papakatishu

Redfish- Miskuaunamesh

Iceland Scallop- Eshu Kameshetet

Seal —Atshuk

Skate - ?

Witchflounder (Grey sole)- Papakatishu

Northern Shrimp- Anishueskashu

Whelk – Esh Kauauneshenakuts

Porbeagle shark- matshinemesh

Herring- ?

Lumpfish- Kapetukushet namesh

Sand Lance- ?

Spiny dogfish- ?

Black dogdish- ?

Atlantic Salmon- Utshashumek

Wolffish- Kamamakapitet namesh

Shrimp- Anishueskashu

Haddock- Ueushu

4.4 Mastemekuts mak teteu mak atshukuts eshinakushets.

Mastemekuts, teteu, mak atshukuts eshinakushets tepants ute Labrador tauets SEA kaiatuskanets.

Beluga Whale	
Humpback Whale	
Minke Whale	
Sei Whale	
Bowhead Whale	
Killer Whale	
Long-finned Pilot Whale	
Atlantic White-Sided Whale	
Sowerby's Beaked Whale	
Harbour Porpoise	Kuekuatshess

Harbour Seal	
Harp Seal	
Hooded Seal	
Grey Seal	
Ring Seals	
Bearded Seals	
Atlantic Loggerhead Sea Turtle	Teteu
Kemp's Ridley Sea Turtle	
Walrus	Uapistun

3.4 Uapuskuts

Uapuskuts euapits tepants ete.

3.4 Netamuk eshinakushets shushipets

Petetash ishinakun ne penshishat
Nistunu shishipets etatau eushinakushitau.

Shishipets mak neskets

Canada Geese- Kanata Nesk
 American Black Duck- ?
 Green Winged Teal-?
 Common Eider- Missap
 King Eider_ tshimushuminash
 harlequin Duck- nutshipauastukueshish
 black scoter-masteship
 surf scoter-mishikutan
 white-winged scoter-?
 Long tailed duck- ?
 Common Goldeneye- nutshipauastukueshish
 Barrow Goldeneye-apastass
 Common merganser-mistashuk
 Red-breasted merganser-?
 Hooded merganser-?

Nashipetamits pineshishta, tshinaskuts mak shesheshuts

Black bellied plover- * *Pepemau eshinakueshets shesheshuts
 American Golden Plover-*
 Semipalmated plover-*

4.7 Metinu enutshikakant

Shash nete mitshet ishinakun ekustitshenanut ute napuatua shelf SEA nenu euauapatakantshi.

Ume enakuapatakantshi

Nenu tsheutshimau katat nete federal mak provincial uin kameatshitats.

Nenu eiapits uinuau tshemamitunentakuau.

Kauissentakuau tshetshi tutakuau nenu essi animentakunits mak apu kastinakuau ne federal mak provincial eshinakutats.

Nash tshemiste nakatuentakant nete napuata shelf SEA

- Potential National Marine Conservation Area(NMCAs) at Nain Bight and
- Hamilton Inlet
- Battle Harbour
- Gilbert Bay
- Hawke Channel
- Torngat Mountains National Park
- Proposed Mealy Mountain National Park
- Coral Communities
- Garnet Islands Ecological Reserve
- Kamiste nakatuenimakanits pineshishats

Uapatinuanua nete assi mishineikanits 4.

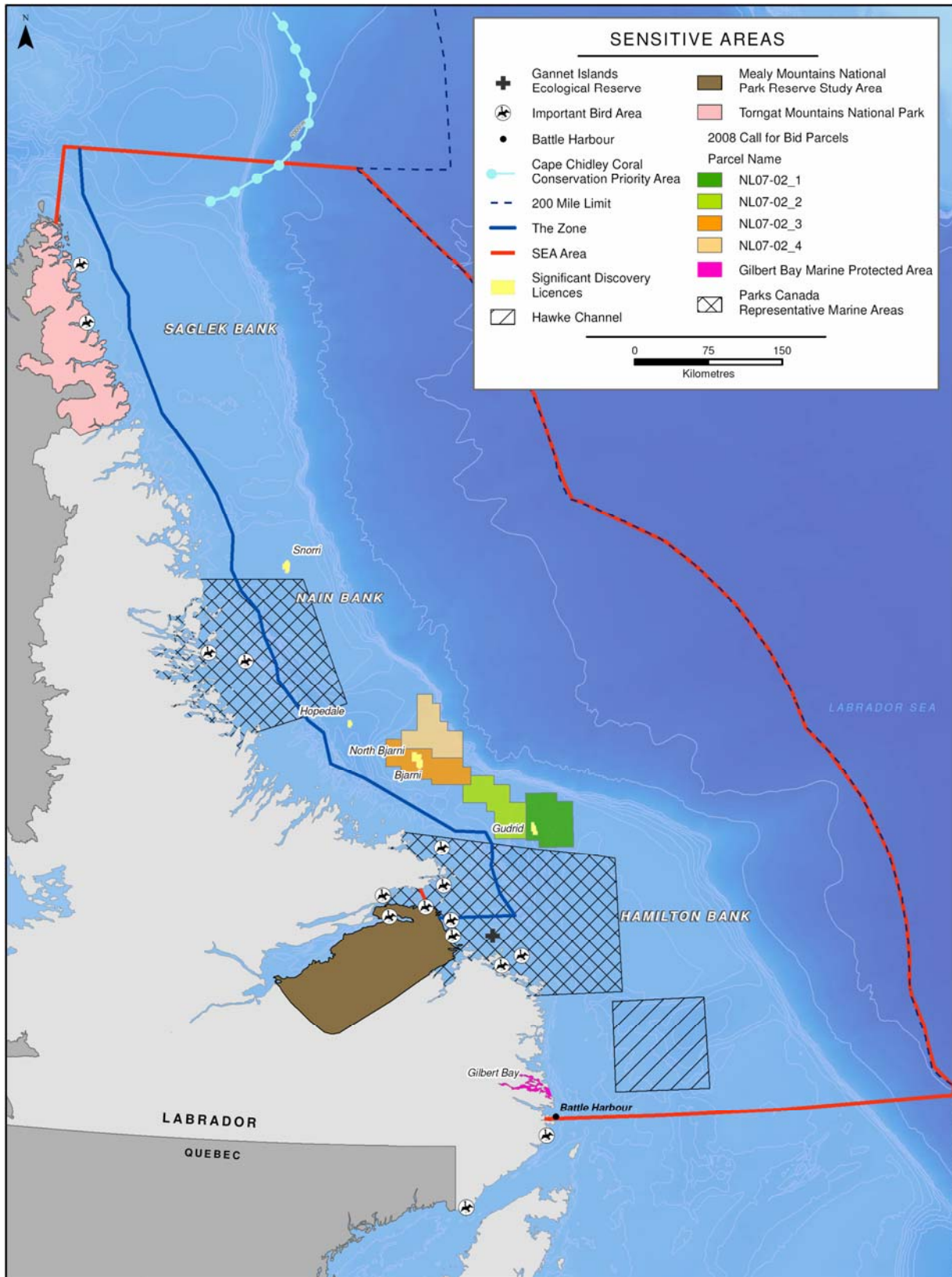


Figure 4.1 Sensitive Areas

5.0 Nash uatapuananuts essishuenanut

Ume C-NLOPB tshika uauitamupan nenu eshishentshi sea tan etenitmitshi nenu etutakanits ute Labrador tauet katananuts.

5.1 Tshakatshimunipinu

Nenua pepemau kaianimuetakuatshi tshekuana kauauitakantshi nenu etutakant pimi kanutshikuant.

Mak napuatua shelf SEA mitshimanete katakats etuish kanauentakant tsheeka meskakent nenu emiskutshipant etakatshi tshekuan tsheeka animenitakuats uantumeskakant.

Tshemamunikantshi nenu kauauitakant tshekuan tshetshi etuish ushitakant tshemamishat tshekuan uets utinakant nistam.

Ume kauauitakantshi tshika mamunakanua tshetshi miste tshitapatakantshi tshetshi etu mamishat tan etenitakant maktsheuauitakantshi tshemamunipitakantshi.

Nenu kamiste uauitakantshi ne tshekuan tshika eiapits euauitakant ne pimi kanutshikuant, mak etutakent ne tshekuan.

Tsheishinakutakant uapetakant nenu tshentumeskanits nete uts aueshishats tan tshetutakuts. Nipits aueshishats etatar, uapusk, teteuts, pineshishats, tampekuts katat aueshishats. Nameshats mak miste nakatuenimakantutshi aueshishats.

Tshetshi eka takuau pineshishats mak pineshish kamatshikeshtet nete kakutiits tshekuan mak kaitusseshets.

- Ne assassu eshi utatanikant.
- Kanutimeshenanut mak tsheminu nakatuenitakant.
- Neka mitshima taianuts nete utenats.
- Nekatsheka mitshima uinakutakanitshi utenaua mak nesh ntapatet.
- Tsheeka natautumiskatshi nenua utta epapamautashuts.
- Tsheeks mitshima nutshikakantshi ne minustukua pineshishats kauauts mak tan eshinispanits ne pineshishats.
- Mak nete epakapinitakant tshekuan tsheka papiukutit mak eka minupanits mak uipunitakanitshe.
- Mak eshi miskakantshi pimi tshekeuima nash minu nakatuenita kanu tuakantshi tante kuekut tanuna unitimeshatnut, utta epimpintshi, innuts kaiapastats nenu menestukua nete tauets.
- Mak nakatuentakanu tshetshi eka pistinikant (enipiuts, euinakamits tshekuan, eshussuakamits tshekuan, euinakamits nipi etukuats nete utits, eastueapautakantshi, nenua uissishipintshi uta, mak kauapinekautshuats nipi, eku aueshishats tsheeka minuskakuts, mak aueshishats nipits katats mak nete tampekuts kapipamutets aueshishats, nameshats tatikuats katats nete tampekuts mak kanutimeshets enutshikuats namesha.
- Nipanikutaue pineshishats. Auenshishats ntamuk eshinakueshets tetuts, nameshats, mak tampekuts katautshi nameshishats, mak aueshishats kemiste nakauenimakanits.
- Passe tshekuana kaissishuanuanut. Ute Labrador tauets katananut. Nashatshitapatamupant.
- Kashapaua tshekuan assinu nte tampekuts eshinikuass mak eshitemit eukun eka

nanuuitakant tshekuan tante miste mitshetipan pineshishats etakuau eatussenanu. Kamiste nakuenimakanits aueshishat.

- Mak aueshishats tamatum etats eishi mitshuts epapamukutish nete epikupitakanit assi tampekut uinakumitakant.
- Mak mitshima Cape Childley kanutshikant mitshima Labrador tauet sea katananuts.
- Miskumi eshinispant. Epapamukutshent miskumi, katsheshukuts, mistima etakuau mak eiapits miste uauinakanipant miskumi ute Labrador kaiatuskanut. Nakatuanpatakanits tan tshenishinakuts tutakantshi pukunenitakantshe.
- Nishina etakuatshi shash unapatakantshi eukun Nain Bight mak nete Hamilton Inlet eshinkutat uinuau NMCA eku pimi ekun tsheka nutshikakant.
- Anuts ume enistit eshinakushets namesh kamishantshi uipita nakatuenitamuts uinuau SARA etanitshi uenua. Ute Labrador tauets sea katananuts.
- Neushap tatischuts pineshishats etats.
- Mak tapants kapimpamaunakanits auentshe nete mitshima.

Tan eshinakuak enispinit tshkuan tsheeka minupintshi

Kamiste nukutakant nenu tshemeshitakantshi ute napuatu shelf SEA nenu utatakantshi tshekuan. Mak tshekuan enukutantshi ume mishiue VEC's mak euaitakantshi enukutantshi mak etshitapatatshi enukutantshi mak etshitapatakantshi utemishiue napuatua shelf SEA. Mak takuna nenua tshekuana uantusenitakantshi tshetshi shutshenitakuatshi mak tsheeka nekatishinikantshi tshintussenitakanitshe. Umenu kauintusentankant apu tapuetakunua mak euiapats eshenakuats mak emitshetshi. Apu tapuetakantshi tshetshi essentakantshi nenu essi emeskakantshi tshekuana mak auentshe.

Ume euaitakant mak euapatinuant ute napuatua shelf SEA essi meskakant enutshikakant. Ume kauaitakant tshekuanu mak essishuenanut tshikauapatinuanu ute SEA mishinanikan kaushutakant mak tshemeatshiaknit netshe auesheshats eshetshitapamikanits thiska uinistuapamakanuts mak eshi uauinakanit mak tshenistupatikant mak uaishiskutamashunanit mak etuish uaintussenimakaninits tan eshinakushets. Mishetuau tshitapakanipan ne kaishishuenanut ne uanispinitakant tsheishinakuats ute katutakant.

Shash mitshena shash unaitakantshi tan eishitshitapatakantshi mak tsheishinakuatshi ute euaitakantshi.

tan eishi tepantshenanut nete tshetutakant

- eshi minuananitshi namesh, mash eshut uaua mask eschinikatakuau nenua uuaumua ute Labrador tauets Sea etananuts ama shuka nistutatunanu.
- Nete enakatats namshats uuaumuaua mak kutatk auenshishat etakuau mak nameshats mak matshits pineshiats ete mak nipits katats aueshishats.
- Takun mishiue euaitakant tshekuan mak auenshishats euauinakanit eshinakueshats mak nete umitshumuau etikunits (eg. Hawk's Channels) eukun ekustianuts.
- Euauapitakant eshinakuat ashini nete tampenukuts.
- Ama shuka takunu entumeskanits nenu etitakushets aueshinishats ketautshi nete nipits. (mistamekuts mak teteuts ketautshi)
- nta eshuuapakanits tante etataui katshi niutau nekamesketau SARA katantshi nenua kamakapitet namesh mak teteuts katatau mak ne pepmau mistimekuts katats.
- Tante enispanitau uantumeskataui umitshimuau mak uautuassimitau ama shuka put meskakanits tante etakuau.
- Mak pimi kuuintumeskuakanua ama nta tsheketshi kuskunu tananu meskuakentshe pimi tante tshekauaunipunu mak.
- Tampekuts tshepetakuats tshekuats tshekuan ute Labrador tauets SEA takanunuts.

5.3 Tan tshetshi mishinanikanitau tan tshenispinitakants tshekuanu

Passe tshenispinitak tshekuan tshiushitatshe tsheutshimau. Nenu mishineikanu tanen uaishinakutat mak tan tshenispinitat. Essi ekuskatakant tshekuan ne kaiaitusseshuts mak tsheutshimau eukun uinuau nass tshetshi miste tshitapantakuau essi mishinanikanits mak tan tshinishinakutatau nenua meskuakanitshe uastenipamakanipimi, mak piminakaishinakust. Mak tshetshi minu uauitakanits esk eka minu tshishipinanuts, nenua euauitakantshi.

- Tante meshets pestinakuau nenua uuaumuaua tshentussenitakanitshi. Mak nameshat mak nameshat mak eshut uaua make aueshishats than espish tshenakatakuau uuaumuauau tsheshi nutssenenitakanitshi. Mak nitussentakantshi nete kanutimeshentshi kaiaitussenshats. Ume eishi nituameskakanits tshekuan tan eishiniuits nemesh kamakakaptet kauintissenitakuau misitmeskua eshinakushintshi uinuau namesha kantussenimat uinuau tshika atuaskateut.
- Kauitapuenkuau uninuau tshenuuts tan etentakuau nenu etutakanits tshekunu. Uantussenitakantshi tshekuaana nash tshekeuimeskenan nenua etussenitiakant tshekuaana ne aueshishats ketautshi pineshishats nipits etats. Mak mestemeskuts tante etakuau eukun nash tshuintussenitmakut.
- Nash tshekemenu nakatuenitenan mishiuetshekuan mak tshekeshitapatenan pekuneputakantshi assi nete tampekuts tutakantshe.
- Tan tshenispitukuts mamu tataue ume kauintussenitakuau tshekuanu mak tsheutinakuau shuniau, tshntussenitakuau tan Atlantic Canada mak tsheishi skutamashutat tan eishi nispitikuts meskataue.
- Tshentussenitakantshi ne pimi enanuuiakant tan tsheishi minukukant nenu.

5.4 Themamitunentakant

Mistshet tshekuan tshuauitakant mak tshemishinanikant nute mishiue tshetshi tutakantshi ute Labrador tauets Sea katananut mak pineshishats etananuts.

Mitshetuts aueshishats shash kameninupinukuts enutshikakanits ete hapuatua shelf SEA. Mak tsheeka pistinikant nenu essi uauitakantshi mak nakatuenitakantshi ne SARA kaianimetakuatshi nenu euauitakantshi tanentakakantshi mak tsheeshinakutakantshi. Sash mitshena mak animentakunu nenu nameshats tan espitukuts mak tshehishinakanits pikunikanitshe mak nenu espinits ekuspinitau mak emitshetshi enanamiskuets assi kauintussenitakantshi tan enispants assi, mak tshentussentakant, mak tshenishinakuats.

Nete naneu napuatua shelf SEA tshitshiuie miste apasta pants nenu innuts mak aissimeuts. Eukuan kanatuituts nette mak kamoushuts, uaua kantuapatats mak mishiue tshekuanu etapastakuau mak tante uinuau miste epepapinitau entuashipetau. Eukuan uets miste animentakuats. Ueshinakatuenitakant.

Nenu miskumi eshinakust mak espinit.

Mak nete kaiaitussenanut napuatua shelf SEA nash uiminu nakuetuenta tshetshi eeka minupinit shessukuts. Tante uinuau uimiste nakatuenitamuakanuts tshetshi nakatuenitats eatussetau nenuenutshikuakanitshi pimina eutinakanitshi. Mak tshika minu kanauentamuts nenu eshitapatshitatau tshekuanu mak tshetshi minu skutamuakanit eishi atussenanut mak nakatuenitakuau tshekuanu nenu uaishinakutakanit.

Mak ntussenitakanipan tshetshi eka takuak kananamiskuets assi, nenu kakusseshits etatau mak enutimeshetau nete nass tauts napuata katatau.

Mak entussenitakant nenu assessu enispint nete tamatum mak eshitshitapatikant

tsheishinakuts.

Mak tsheuiminu tshitapatikant ne etutakant tshekuan ne uaishinakuats mak tsheketshestinuapatikant nete katutakant Greenland kanutshikuakant pimi eiapits.

Ume ute napuatua she;f SEA tapue uinuau nutsshikuakanipants nents aneshueskashuts mak pemituteuts. Mak nents kananiuetapepts utaniuiuau nete tampekuts eiapits tepants mitshima enutshikakanitshi pimia. Put mak tshika minuats tananu nete eatussenanut mak tshenutimeshenanut.

5.5 Masten tshekuan tsheuaitakant

Uin napuatua shelf SEA euaitakuau nenu eishiuuapatats nete uts tsheshi atussenanut ute napuatua shelf SEA. Ume uets miste euaitakant tshekuan eukuan tapue miste mamishinanikanu ute SEA kaiatussenanut mak kauuinakanit aeshishats katats nete tampekuts mak netamuk etat aeshishat etats nipits mak Nunatsiavut katepentakuau nete SEA kaiatussenanut shash takunipan kashuka shapats ne assi eatussenanut. Mak nishueiets takunipant eukun NMCA nameshats kanutshikuakanits nete. Hawk channel Hamilton area mak nete mishima nent. Natikam nete Gannet Island pineshishats kamitsheti kuau, mak nete 14 IBAS, mak Torganat Mountains National Kauimahtshenanuts, mak kauauitakaht mealy Mountains National kauimantshenanuts, eukun tante nenantuiunanuts mak ekuspinanuts. Mak tutukuats assi kameskekant nete eutenats shash tante miskakanipan ute napuatua shelf SEA.

SEA uauitamupan tshekuanu eishiuaitakanits tsheispanits uin SEA etananut tapue tshitshue miste mishapan mak tsheeka miskutinikant mak nenu eshipikunikant mak miste tshika uaitakanu tante essi eshinakutakant nete SEA eshi tshitapatakuau. Mak nete Nunatsiavut katepentakuau, passe apussentakunits. Uinuau C-NOPB eukun tsheukaniminanut nete ESRF management board kaiatusseshuts mak tshetshi mishinaushunanut mak ntumeskakananut shuniau tshetshi tshitshipinanut ma.

Ume essi uauapativanut ute napuatua shelf SEA. Mak ne C-NLOPB mamu atussetau nete uts Nunatsiavut katipentamintshi nenu tshetshi nantumeskats atusseunu uinuau ne C-NLOPB mak tshetshi tshepenitatau nenu uantumekatau ute napuatua shelf SEA mak tshetshi mamu skutamashuntshi nenua ESRF, mak ne PERD, PRAC mak kaui miste ntussentakau nete katats Memorial Universtiy. Ne C-NLOPB tshika uauitamueuts nenua kakusseshintshi tan tsheishinakunits ute napuatua. Mak etuish nte. Kaiatusseshets tshika mamushaninamuts nenu essishuenanutshi mak tshe mamishinatakuau tan tshe ishinakutakanits nenu tshishipinanitshe. Ume euantussenitakant mishiue tshekuan ume uatutakant tshika mamishinanikanu mak tshetshi euaitakanut.

Ume uaishinakutakant nete etananut SEA uimiste nakatuenitakanu essi pikunikant mak emamashikant ne uanakatuenitakant tshekuan nete ekustitshenanut kakashipant assi eukun tsheeka nutshikapant ne pimi tante tshika kustitshenanu. Mak tshika meshinanikanu tan tipanikan essi nutshikuan pimi mak tan enispishats enutshikakant nenu enu mishinanikantshe etutakant nete tshekuanu tshika uinakatuapatamuts tsheeka pitakuau esk eka nash tapueietakunits essi eatussenanut mak patush tshetapuenanut ne uatutakant.

Uinuau SEA kauauitakuau tshika mamishinanut mak tsheatshitakuau essi mitshima takunits ute napuatua nta 2007 eukun masten tshetapuetakanits eukun umenua kuauaitakanits.

Hawke Channel eukun katshipanikant tshetshi nutimeshenanut eukun ete kanutshikuakant pimi, mak eapits nameshats kauiutuassimats, eukun eiapits eka tapuetatunanuts.

Parks Canada shash nish-tatinu etukunits nenu etshitapatakant mak uatutak National Marine kaminu kanauentak assinu. Nent mitshima tauts mak Hamilton Inlet nete Hamilton Inlet euku

uets tshika utinikant tshetutakant eukun uets Parks Canada minat eiapits nenu C-NLOPB mamu atussentshi mak tshetshi nituapatamentshi tan tsheishi apatshitakuau.

NMCA C-NLOPB enkun uinuau kassenitakuau nenu Park Canada NMCA kauishinakutats mak nass kaitapuetuau nenu tsheishinakutats nte napuatua shelf sea kaiatuskanits.

Ume uenua kaishitshitapakanits tshika miste mishauau tshetutakant, uin ute Hamilton Bank. Ume katutakant nete pimi mak kanuts utinikant pimi tshetshi ntuetakant mak tsheeka ishinakuak put kie kustitsheanuts tshetshi tutakant mak uanakatuenitakant ne tshekuan enitautshimakak. Ume kauiuaitakant apu tshika ueuetenitakant pepemau eshinakutakant. Ume uaishinakutakant netshinishinakuats, mak C-NLOPB tshika uauitamuats nenu DFO mak Nunatsiavut utshimaua mak kanutimeshets katatau uinuau tshemiste uauitamuakanits nenu tshemiste nustakanits nete pimina kanutshikuakanitshi.

Ne tsheissinutshiakanits napuatua SEA shash miste nutshiakanu nta essi miste atuskatakant mak enutshiakant ne ashini. Ume uanakatuentakant ashini nete katakuak nete mitshima utenats tshetshi papint minuats uuskassishipintakan ne uapukunenikant. Uin C-NLOPB uintuenimeu tshetshi ettu tantshi auenuau tsheatuskatamentshi nenu ashininu mak metinu tshepikunikant nenu ashini nete mitshima utenats eatussenanuts mak tsheuiminu nakatuenitakant.

Ume pimi uets kautinakant put kie mitshima nete Gilbert Bay MPA, Gannet Island kaatussenanut. Mak uets nakatuenitakant nete tsheeka natutenau nenu etushumikunek euaitakant mak ume essi nutshikakant assi puk kie ashini. Ume essi miste pikunakant uautinakant mak kauiminu nakatuenitakant.

Mak kaitapuetatunanut ne uatutakant mak SEA uapatinueu nenu essi atuskatakanit mak eshinakutakanit ute napuatua shelf kaatuskanut mak nenu essishuenanut katutakanut. Kaatussenanut mak kamashinanikananut mak kamashinanikananut tshika utinakanut papeiuk tsheatuskatakanut ne emitshet atuskakanuts.

Ume kamiste tshipinitakant tshetutakant uatshistakant emishinanikant tshekuan uaissishueanut. Ume kaiatusseshut, uinuau tshika minutauts nenu etistents mak tshika tshetshinue tshetshi tshitapatikant ume tshita patakantshe sash tshekuan tapuenuanut eshinakuak emiskakant. Uinuau C-NLOPB tshika uauitamupueuts nenu kaatussest, mak Nunatsiavut utshimau, mak tsheutshimau mak Provincial tsheutshimau kaiatusseshimuaua mak auentshe kaatuskuats tsheutshimaua mak auentshe kutakuts kaiatusseshetshits tshetshi tapuetakuau tshetshi ushitanits nenu mishinanikanu uitutakanits nenu mishinanikanu uitutakanitshe.